



LOWRY BAY YACHT CLUB



SEAVIEW MARINA • PORT ROAD • LOWER HUTT

phone > +64 4 568 3715

email > info@lbyc.org.nz

website > www.lbyc.org.nz

facebook > <https://web.facebook.com/groups/317896627922>

Contents

COMMODORE’S MESSAGE3

OFFICERS AND EXECUTIVE.....4

CLUB INFORMATION.....6

MEMBER INFORMATION8

CRUISING EVENTS.....10

LOWRY BAY MOORINGS11

HOUSE COMMITTEE EVENTS ON LAND15

SAILABILITY WELLINGTON16

2019 / 2020 SEASON WINNERS.....17

VICE-COMMODORE’S MESSAGE20

2020 / 2021 SEASON NOTICE OF RACE.....21

SAILING INSTRUCTIONS: 2020 / 2021 SEASON28

RACE COURSE MARKS.....42

CLUB COURSES.....44

PROGRAMME OF RACES 2020 / 2021 SEASON47

SUMMARY OF RACE PROGRAMME 2020 / 2021 SEASON61

RACE OFFICER RESPONSIBILITIES AND DUTIES.....62

MARINE RADIO USE.....65

MARINE RADIO STATIONS68

COOK STRAIT INFORMATION71

BOAT REGISTER.....75

MEMBER LIST.....79

TIDES 2020 / 202184

COMMODORE'S MESSAGE

Welcome to the 2020/2021 season.

It's exciting to see a number of boats changing hands, and to see new members join the club.

Whilst hoping Covid-19 is behind us, I'm mindful that with the pandemic sweeping the world and threatening to breach our borders, this year we will have to not only anticipate weather interruptions, but also possible Covid-19 Alert level changes. Hopefully, this will only effect on- shore activities and we do not have to go back to Alert Level 3 that would keep us off the water. I am thankful that the present outlook is that we will be able to enjoy our boating for another season.

This year there are a few changes in the way we organise the club without a manager, but for members it will hopefully not be too different. If there are things that need attention please let me know as soon as you can so we can address any gaps that may appear.

Every new season requires preparation and planning and this year is no exception. Vice commodore, Jamie Reid, has a new sailing programme adapted for this season based on the feedback from last year.

Our recently elected Rear Commodore Cruising, Guenter Wabnitz, brings a new energy to the club particularly with his Practical Boating programme. We can look forward to a regular series of technical and recreational events for the year that are aimed at improving our boating skills and enjoying the process.

Rear Commodore House, Lynn Porter, has plans for the new season including a live concert, Christmas parties for kids and adults, Commodore's dinner and more.

Friday night racing remains a focal point for the club with our biggest fleet turnouts, and it's great to catch up with members afterwards at the club.

Also, this year there is a planning group, headed by Ingrid Harder, looking at options for the club's future. Members are encouraged to have their say on what they consider is necessary to be a thriving and vibrant club.

I wish you all fair winds and happy boating

Keep Safe



Max Meyers
Commodore

commodore@lbyc.org.nz

OFFICERS AND EXECUTIVE

Patron

Mr Ian Craig



President

Mr Bob Rowell



Commodore

Max Meyers

Email: commodore@lbyc.org.nz

Phone: 021 482 315



Vice-Commodore

Jamie Reid

Email: vicecomm@lbyc.org.nz

Phone: 027 458 8804



Rear-Commodore – Cruising

Guenther Wabnitz

Email: cruisingcapt@lbyc.org.nz

Phone: 021 616255



Rear-Commodore – House

Lynn Porter

Email: rearcomm@lbyc.org.nz

Phone: 027 737 6618



Executive

Max Meyers, Commodore

Jamie Reid, Vice-Commodore

Guenter Wabnitz, Rear-Commodore
Cruising

Lynn Porter, Rear-Commodore House

Keith Murray, Treasurer

Brent Porter

Ingrid Harder

Mary Meyers

Sailing

Jamie Reid, Vice-Commodore

Jennie Darby, Sailing Secretary

Brent Porter

Lynn Porter

Grant Reid

Bob Rowell

Kathy Walls

John Lloyd

Tony Lucie-Smith

Cruising

Guenter Wabnitz, Rear-Commodore
Cruising

(In combination with Practical Boating
registered members)

House

Lynn Porter, Rear-Commodore House

Lisa Jackson – House Secretary

Jade Burrows

Patrick King

CLUB INFORMATION

Street address

Seaview Marina
100 Port Road, Lower Hutt

Postal address

PO Box 30-533
Lower Hutt 5040

Club contact numbers

Email: info@lbyc.org.nz

Phone: 04 568 3715

Website: www.lbyc.org.nz

Bar hours

Fri: 5.00pm–10.30pm

Sat: 4.00pm – 6.00pm (if there is no function in clubhouse)

Sun (non-race days): 4.00pm – 7.00pm by arrangement

Sun (race days): From finish of race till approx. 7.00pm

The bar may close before these closing times.

Complimentary bar snacks are served in the Seaview Room bar between 5.00pm and 6.00pm on Fridays.

Meals at LBYC

Meals are usually available on Friday nights.

Snacks are always available from the bar when it is open.

Hire of clubrooms

The clubrooms are an ideal venue for gatherings, meetings, weddings and celebrations. To enquire about hiring the clubrooms please contact the Booking Officer at bookings@lbyc.org.nz. Members receive discounted hire rates.

Club general rules

The general rules of Lowry Bay Yacht Club Incorporated are on the website or available from the on request to info@lbyc.org.nz

What's On

“What's On” is a weekly email to members. It contains reminders about coming events and club activities as well as news and updates. Contributions can be made to **whatson@gmail.com** by 5pm each Tuesday.

The Cutlass

“The Cutlass” is the club's newsletter emailed to members quarterly. It is also available on the website and on the noticeboard at the club. Contributions from members are welcome.

Editorial and advertising enquiries and contributions should be directed to the **cutlasslbyc@gmail.com**

Club website – www.lbyc.org.nz

The club's website is regularly updated and features news, promotions, race results, the racing programme, photographs, plus information on Committee contacts, social events, club history and the club's newsletters.

LBYC Wharf Signal Building

The LBYC Wharf Signal Building is situated at the end of the old Point Howard Wharf. It is staffed during most club races starting off Point Howard Wharf. Race officials monitor VHF Radio CH 62 (or 77 or 17) or cell phone 027 737 6618 (when Lynn Porter is there). Some races may be started on-the-water using a club member's launch.

MEMBER INFORMATION

Club registration

To be eligible to contest any club race, members of Lowry Bay Yacht Club are required to register their vessels on the LBYC Boat Register (refer Club General Rule 36). Forms for this purpose are available from the club office. Boat registration with the club is free but you must pay a racing fee, and your boat will be listed in the club Almanac and on the club website. So that our records may be kept up to date, please advise any changes in boat ownership to info@lbyc.org.nz or via the LBYC website boat register.

Yachting New Zealand registration

In addition to the club registration, members wishing to race their yachts in club or national events must also register their vessels with Yachting New Zealand in the name of the current owner. Any changes of ownership or boat details must also be registered with Yachting New Zealand.

Registration can be done online on the YNZ website: www.yachtingnz.org.nz.

Address any correspondence to:

Yachting New Zealand
PO Box 33-1487
Takapuna, Auckland 0740
reception@yachtingnz.org.nz

New Zealand registration

Yacht owners may apply to register their vessels with the NZ Registrar of Ships and must do so if they wish to voyage abroad. Details of registration are available from:

Maritime New Zealand
PO Box 25-620
Wellington 6146
Phone: 0508 22 55 22
Enquiries: enquiries@maritimenz.govt.nz or www.maritimenz.govt.nz

Accidents

The Maritime Safety Act of 1995 requires skippers to notify their nearest Maritime Safety Authority as soon as practicable about accidents, incidents and mishaps involving serious harm. Verbal reports can be made by phoning MNZ's Rescue Coordination Centre NZ at 0508 222 433 or on VHF RADIO CH 16. Alternatively, you can complete a form on the MNZ website or print a form off the website:

www.maritimenz.govt.nz/commercial/safety/accidents-reporting

It is a Wellington Harbour bylaw that all accidents and incidents on the water be reported to the Harbour Master. This does not include racing contact between yachts unless there is significant damage or injury.



Synfinity

CRUISING EVENTS

In addition to the Club's racing programme, the Cruising section will focus on

- Being social on the water
- Maritime safety and health
- Promoting the marine environment.



This is for every boat owner, skipper and crew, club members and friends, and will include both theory and practice.

We will continue the popular, monthly-held “Technical Evenings” and about three coastal events across Cook Strait during summer. In addition, we will organise two to three practical boating events per month in the Wellington Harbour to practice good seamanship on the water, such as anchoring, navigation, man-overboard, rafting up, boat handling, distress response, boat maintenance, radio operation, everything that people wish to practice to keep up skills.

Details are outlined on the Club's website under Cruising:

<https://www.lbyc.org.nz/practical-boating>

and on your regular “What's On” emails.

I look forward to your feedback, sharing good times on the water and getting to know you.

Guenter Wabnitz
Rear Commodore – Cruising
cruisingcapt@lbyc.org.nz

LOWRY BAY MOORINGS

LBYC has seven moorings available around Wellington Harbour that provide members with safe holding for day-stays. Except for North Somes-Matiu mooring, which is owned by LBYC, the moorings are jointly owned with RPNYC.

Users acknowledge that they occupy the moorings at their own risk in all respects. Neither the club(s) nor any officer of the club(s) are liable on any grounds whatsoever for any loss, damage, cost or expense arising from, or incidental to, any use of moorings.

When vacating a mooring, please make sure that the loop at the top of the pole float is left clear of the water. Feed the loop down the tube to allow the loop to stay clean and dry. Feel free to clean off any marine growth such as weed, mussels etc from the buoy and/or rope. We all have a responsibility to keep the moorings in good condition.

Any defects relating to moorings should be reported to the info@lbyc.org.nz as soon as practicable.

Lowry Bay
Block 3.2 tonnes
Max combined vessel tonnage 20 tonnes
GPS: S 41° 15.355 E 174° 54.456

Ward Island
Block 5.3 tonnes
Max combined vessel tonnage 28 tonnes
GPS: S 41° 17.498 E 174° 52.319

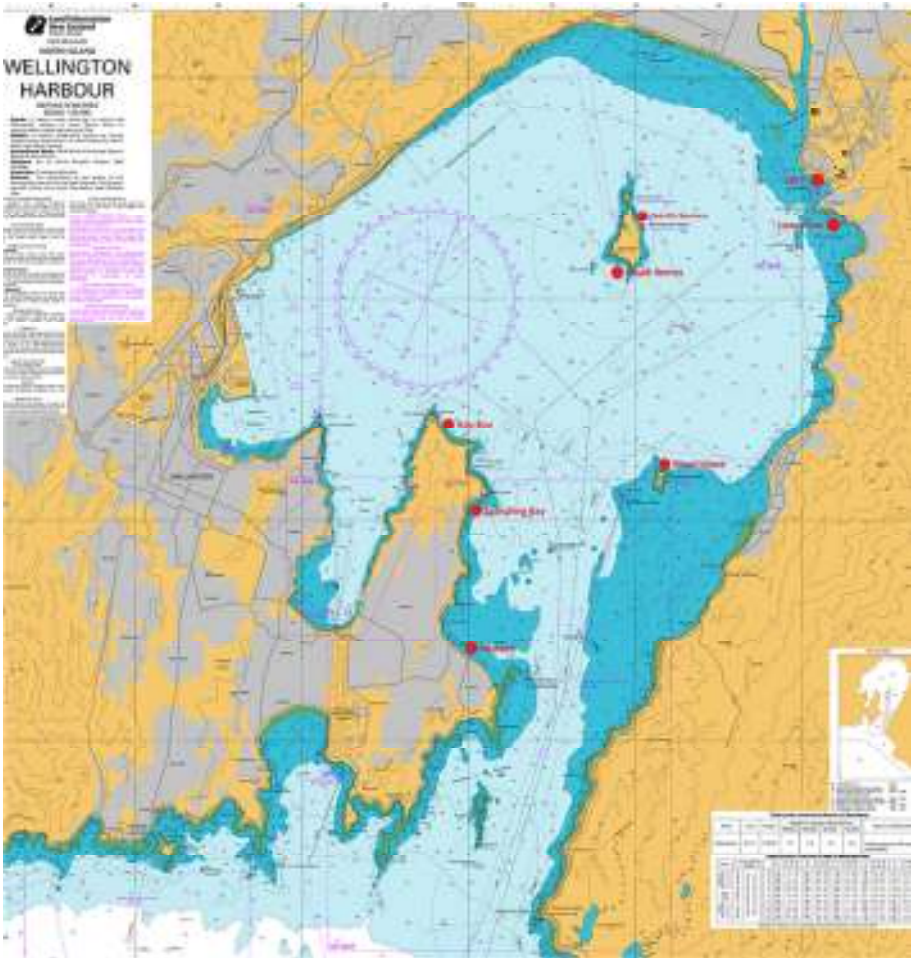
South Somes-Matiu
Block 5.3 tonnes
Max combined vessel tonnage 38 tonnes
GPS: S 41° 15.7 E 174° 51.8

Seatoun
Block 3.2 tonnes
Max combined vessel tonnage 20 tonnes
GPS: S 41° 19.166 E 174° 49.994

North Somes-Matiu
Block 2 tonnes
Max combined vessel tonnage 15 tonnes
GPS: S 41° 15.211 E 174° 52.002

Scorching Bay
Block 3.2 tonnes
Max combined vessel tonnage 20 tonnes
GPS: S 41° 17.887 E 174° 50.090

Kau Bay
Block 5.3 tonnes
Max combined vessel tonnage 38 tonnes
GPS: S 41° 17.148 E 174° 49.701



Please respect the following rules if using the moorings:

Resource Consent Conditions

- The moorings are for short-term use only (a period not exceeding 24 hours).
- Vessels must not be left unattended.
- The maximum vessel tonnage varies from buoy to buoy - either 20 tonnes or 38 tonnes – and is noted on the tag. These limits must not be exceeded.
- Coastal marine area regulations state that to empty or permit to be emptied any sanitary device or to dump any rubbish into the harbour is a contravention of

the Resource Management (Marine Pollution) Regulations 1998. Take your rubbish back to port.

Priority of Use

- First priority for the use of moorings is for vessels in genuine maritime distress, whether or not they are members of LBYC / RPNYC. This includes vessels who are unable to safely make their way to a marina.
- Second priority is for current, paid up members of LBYC / RPNYC whose vessels are recorded in their club's boat register. Vessels must identify themselves by flying their club's pennant. These are available from Club Managers.
- Club members must allow other members to raft-up alongside as long as the mooring doesn't become overloaded.
- If the mooring is occupied by an ineligible boat, club members may politely point out that they are owned by LBYC and RPNYC and ask them to leave, or alternatively, raft-up and encourage them to join one of the clubs.

Rafting up procedure

- Incoming boat prepares their own bow/stern lines prior to approaching the moored boat.
- Circle the boat on the mooring and ask if you can raft-up and on what side they would like you to raft.
- Incoming boat puts down fenders and comes in slowly from astern and parallel.
- Receiving boat should have someone at the bow and stern to take lines.
- Once bow and stern lines are tied, put on two springs. It is important that springs are tight. Adjust all lines as required to have boats parallel.
- Yachts need to watch spreaders. Generally, yachts lie better against yachts, launches against launches.
- The heaviest boat should take the mooring and be in the middle of the raft.
- When rafted up with other boats, be considerate to others and keep the noise down as sound carries a long way over water.
- Ask permission to cross over boats to reach another and use the foredeck rather than the cockpit if possible.
- Once boats are safe introduce yourselves.

Background Information

In 2015 the 'Spring Chickens' group decided to pursue a new project – resurrecting club moorings around the harbour – with a view to encouraging new members to join LBYC. Unfortunately, inspection proved that the old blocks had deteriorated

to such an extent that it was not possible to use them. LBYC's grants committee applied for funds to cover the cost of deploying four new moorings and grants were received from Pub Charity and The Four Winds Foundation.

They then faced the difficult and time-consuming task of negotiating with GWRC to construct moorings to meet their current resource consent policy. This proved to be a challenging project. As the resource consent allowed up to six moorings, the executive agreed that they should deploy an extra two. There was very little extra cost involved so with additional funds provided by a member to cover the shortfall, six moorings were deployed.

These moorings are jointly owned by the Lowry Bay Yacht Club and Royal Port Nicholson Yacht Club. The mooring buoys are pink and clearly marked LBYC on one side and RPNYC on the other. The actual construction of the moorings was carried out by the 'Spring Chickens' mooring group, assisted in the final stage by other LBYC members.

In 2019 DOC transferred to LBYC the ownership and resource consent to one of their existing moorings north of Matiu Somes Island. This seventh mooring is owned by LBYC only. The existing mooring block is smaller than the other moorings but should be capable of providing good holding for several boats in good weather. The mooring buoy is pink and clearly marked LBYC.

Seaview Marina have generously offered to cover the cost of ongoing maintenance.

HOUSE COMMITTEE EVENTS ON LAND



You will recognize me from behind the bar and being involved with race management. My team and I are here again to help organize social events on land.

The job of the house committee is to organize the many activities and events back at the club house, whether it is after racing, cruising or our Friday club night. We do have a great club house with the atmosphere being family friendly, so remember to invite family and friends along to socialise. Friday night is your club night, so do come along for a drink, a meal and a catch up of all the goings on around the club.

The house committee is always planning the next event whether it be Commodore's dinner, quiz night or children's events. The big event to kick off the summer is an evening concert on the deck; watch out for further details on the website and "What's On". There will be many more special events throughout the year, especially during the winter months.

The house committee is always looking for volunteers to help with ideas and organizing skills. Feel free to come and have chat with me.

Make sure you keep a close eye on our social media; Facebook, website and the clubs "What's On" email for the goings on around the club. There will be something for everyone.

I look forward to seeing you at a Friday club night or one of our upcoming events

Lynn Porter
Rear-Commodore – House
rearcomm@lbyc.org.nz

SAILABILITY WELLINGTON

Sailability Wellington Trust values our affiliation to Lowry Bay Yacht Club. For our regatta times, like the Hansa Nationals in Feb 2020, the Compass Regatta and Antarctic Challenge, it's great to share facilities and to collaborate to enjoy the life-long sport of sailing!

Among our dedicated group of volunteers, are a significant number of LBYC members. We would love to have more. Not all our volunteers spend time in yachts. We need dock hands, pursers, and people to help in many other roles.

If you wish to become involved, please call our Club Captain, Brent Porter on 027 544 0355 or CEO Don Manning on 0272 494 275. Happy sailing.



2019 / 2020 SEASON WINNERS

Season Championship

Altex Devoe Cup	Combined Div Handicap	Celebrity
International Cup	Combined Div Line	Celebrity
Elaine's Solitaire trophy 2	Cruising Div Handicap	Crewcut
Elaine's Solitaire trophy 1	Cruising Div Line	Crewcut

Pursuit Championship

Crewcut

24-Hour Endurance Yacht Race

Longest Distance Shield	Masterpiece
1st Handicap Cup	Footprints
2nd Handicap Cup	Halo
3rd Handicap Cup	Masterpiece

Spring Series

LBYC Spring Cup	Combined Div Handicap	Kaimai Flyer
	Combined Div Line	Kaimai Flyer
BNZ Spring Cup	Cruising Div Handicap	Crewcut
	Cruising Div Line	Crewcut

Summer Series

Mobil Summer Cup	Combined Div Handicap	Celebrity
Mckelvey Cup	Combined Div Line	Kaimai Flyer
Wgtn Boatbuilders Cup	Cruising Div Handicap	Crewcut
LBYC Summer Tankard	Cruising Div Line	Crewcut

Winter Series

Winter Cup	Combined Div Handicap	Testarossa
Family Hotel Cup	Combined Div Line	Testarossa
Wgtn Boatbuilders Cup	Cruising Div Handicap	Crewcut
LBYC Winter Tankard	Cruising Div Line	Stunned Mullet

Open Day

Hal Wagstaff Trophy	Combined Div Handicap	Kaimai Flyer
	Combined Div Line	Kaimai Flyer
	Cruising Div Handicap	Quetzalli
	Cruising Div Line	Quetzalli

Rum Regatta

Colin Akhurst Mem Cup	Div 1 Handicap	Gucci (RPNYC)
	Div 1 Line	Kaimai Flyer
Rum Regatta Cup	Div 2 Handicap	Shardik
	Div 2 Line	Shardik
Rum Regatta Trophy	Cruising Div Handicap	Crewcut
	Cruising Div Line	Crewcut

Single Handed

Single Handed Trophy	Handicap	Kaea
	Line	Celebrity

Two Handed

The Glass Shoppe Trophy	Handicap	Minika
	Line	Squid Vicious

Friday Night Pursuit Series

Series A	Oct 18	Crewcut
Series B	Dec 18	Rosschild
Series C	Feb 19	Crewcut

Commodore’s Tankard

<i>Most improved performance</i>	Synfinity
----------------------------------	-----------

John Gibson Memorial Trophy

<i>Participation in Commodore’s Division</i>	Crewcut
--	---------

Bruce Unsworth Memorial Trophy

<i>Special service to the club</i>	Bob Rowell
------------------------------------	------------

Hands up / Stirrers Award

	Mary Meyers
--	-------------

Russell Bates Memorial Trophy

Older active sailor

George Geris

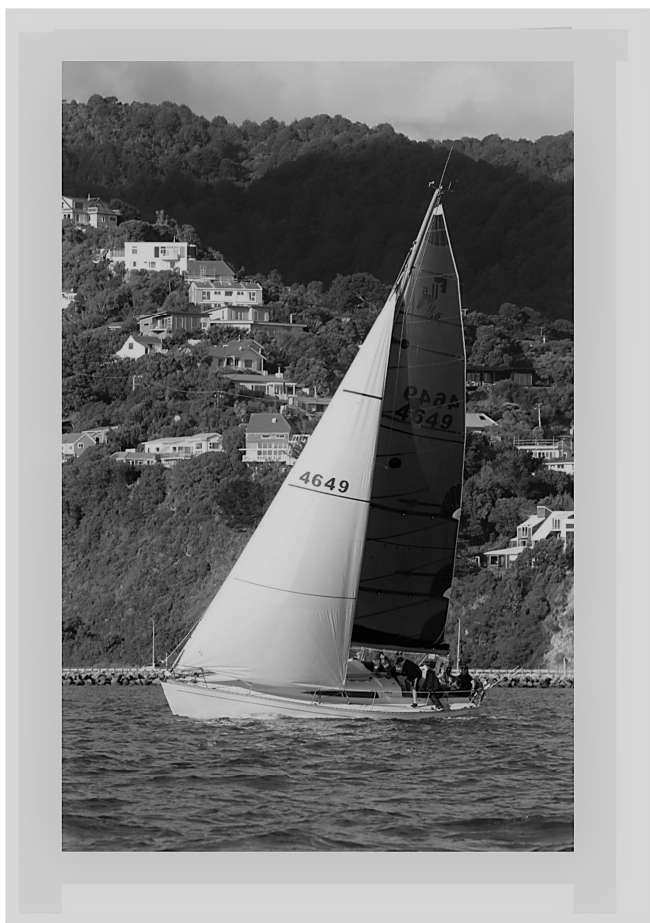
Coopers and Lybrand Cup

Crew person of the year

Mike Mador

Walker Offshore Challenge Award

Am Meer



Celebrity - Season Champion Combined Division

VICE-COMMODORE'S MESSAGE

I saw a picture the other day with a caption that said, "Covid ruined my sailing season". And well, that it did. We lost quite a few races and events but still managed to get enough championship points to make a completed season.

A really positive thing that has come out of this season is that our members and skippers are open to change. Although it was forced upon us, the new normal has proved to be interesting and challenging. I'd like to thank all the skippers last season who made my job easier by adapting so easily to new processes and online forms etc. Let's be honest, it's a modern world, and that's the way a lot of things are going now. But for the new season we are still keeping some processes in place that have been working well in the past like writing the course on the course board and signing in the same way if the Covid rules allow.



We have taken the opportunity to shake things up a little. The new season calendar is looking a little different from previous years. Be assured. We do seriously consider and happily accept all correspondence received to any person in the sailing committee or myself regarding the racing schedule, likes and dislikes. All messages get tabled.

We are very fortunate to have returning sponsors and supporters, and where you can, we ask that you please support these local businesses. I have been putting energy into finding crew and matching crew to skippers. This task is relatively simple and it's amazing what happens when you simply just ask. We encourage all crew to sign up to our weekly newsletter "What's On" as this is the best way to keep in the loop with the club and see upcoming events.

We are working hard on keeping all the comms from the club relevant, up to date and correct. We have made mistakes in the past that we do not want to replicate. The website calendar will always be up to date as this is a live calendar with club hires and events added all the time.

I'm excited to be in my second year now as Vice Commodore. A big thank you to the Sailing Committee who have given me support and assistance during the year. I'm grateful that Jenny Darby has agreed to stay on as Sailing Secretary, This role can be full on but Jenny has done a great job, even taking on yet another role on top of this at LBYC.

If you would like to become a member of the sailing committee, just flick me an email and let's talk. Please enjoy yourself this season and above all, we will be doing everything we can to keep the racing SAFE.

Jamie Reid
Vice-Commodore

vicecomm@lbyc.org.nz

2020 / 2021 SEASON NOTICE OF RACE

The Organising Authority is the Lowry Bay Yacht Club Incorporated (LBYC)

Seaview Marina, 100 Port Road, Lower Hutt | Tel (04) 568 3715

Website: www.lbyc.org.nz | Email: info@lbyc.org.nz | VHF: CH 62

1 Event

- 1.1** This Notice of Race covers all LBYC racing except: Rum Regatta and 24-Hour Endurance Yacht Race.
- 1.2** For any race or series, LBYC may issue a separate Notice of Race that may replace, modify or supplement this Notice of Race.

2 Rules

- 2.1** Racing will be governed by the Rules as defined in the current Racing Rules of Sailing (RRS). *Note* RRS 2021-2024 takes effect 1 January 2021.
- 2.2** The Yachting New Zealand Safety Regulations (as below) shall apply:
 - a)** Part II Category 5 applies for keel boats and multihulls. In addition, they are to carry a suitable bosun's chair.
 - b)** Part V Category C applies for trailer yachts.
 - c)** Part VI Category B applies for sports boats.
- 2.3** Yachts complying with paragraph 2.2 (a), (b) or (c) are to have a serviceable inboard or outboard engine and propeller capable of driving the yacht in smooth water at a speed exceeding 4 knots.
- 2.4** All yachts are to have a current Wellington Harbour Chart NZ4633
- 2.5** All boats must have a VHF radio that can always be heard on deck on channel 62 while racing and must be able to respond if called.
- 2.6** RRS 52 'Manual Power' shall not apply.
- 2.7** RRS 51 shall not apply to the adjustment of a canting keel or water ballast. Lifting keels must always be locked down while racing.
- 2.8** The Wellington Regional Council Navigation and Safety Bylaws will apply.
- 2.9** Appendix T will apply.

3 Advertising

- 3.1** Yachts may be required to display advertising chosen and supplied by LBYC.

4 Eligibility

- 4.1** Entries will be accepted from yachts on the LBYC Boat Register and from visiting yachts.
- 4.2** Entries are open to all keel boats, multihulls, trailer boats and sports boats. Others may be allowed to race at the discretion of the Sailing Committee.
- 4.3** Visiting yachts will not be eligible for LBYC trophies but will be eligible for prizes.
- 4.4** LBYC may accept, reject or subsequently cancel the entry of a visiting yacht for any reason.
- 4.5** All competitors (i.e. skipper and crew) shall be financial members of LBYC. Exceptions are for:
- a)** Friday Night Pursuit Championship races.
 - b)** Crew under the age of 20 years.
 - c)** Non-members who sail for a maximum of three Season Championship race days during a season.
 - d)** All crew of visiting yachts who are financial members of a club recognised by the crew member's national authority.
- 4.6** For the Cruising division - No spinnakers or extras may be set. Extras are defined as sails not normally used to advantage to windward. Headsails may be poled out using spinnaker or whisker poles but shall only be carried on a permanent load bearing forestay with only one headsail per forestay.
- 4.7** Yachts wishing to sail under PHRF handicap must ensure that they have selected this on their entry and supplied their current PHRF registration number.

5 Entry

- 5.1** Eligible boats may enter by completing a Season Entry Form and Safety Declaration and submitting it to LBYC.

5.2 A non-refundable entry fee shall be paid prior to racing;

Whole season entry fee: \$170, or

Pursuit Championship: \$60.

Individual series (Spring, Summer or Winter): \$40 each.

Short-handed Series: \$20.

Individual race entry fee: \$10 members | \$15 non-members

Racing fees may be paid electronically by depositing the appropriate fee into the LBYC bank account: 06-0545-0013952-00. Please enter the boat name in reference, and the code 232/04 in the particulars. Alternatively, there is a secure wooden box next to the notice board where fees in envelopes can be deposited or payment can also be made by eftpos at the club bar.

5.3 Late entries and visiting yachts may enter by calling up Lowry Bay Sports on VHF radio channel 62. Late entries must do so prior to the warning signal of the first race of the day for any division, but shall then complete an entry form after the race at the clubhouse or have completed one within 48 hours of the race and be emailed to vicecomm@lbyc.org.nz.

6 Schedule

6.1 It is strongly recommended that a representative of each yacht intending to race in the 2020–2021 season attends the pre-season briefing in the LBYC clubhouse at 1900 hours on Friday 18 September 2020. Safety documents will be given to all representatives present.

6.2 Any yacht not represented at the pre-season briefing must see the Vice Commodore to be briefed on the season, complete a season entry form and pay any relevant racing fees prior to racing.

6.3 The racing schedule will be published in the LBYC Almanac and on the LBYC website.

6.4 The scheduled time of the warning signal for the first race each day will be published with the racing schedule.

7 Sailing Instructions

- 7.1** The Sailing Instructions will be made available on the LBYC website.

8 Racing Area and Courses

- 8.1** All racing will be held within Wellington Harbour, including the South Coast as far as Island Bay.
- 8.2** Windward–leeward, triangle and/or harbour courses may be sailed.

9 Scoring

- 9.1** Races will be scored on General Handicap, PHRF and Line.
- 9.2** Championship racing will be for the Combined Division and Cruising Division (Non- spinnakers).
- 9.3** Series Scores; only series entrants will be eligible for series scores.
- 9.4** Non-championship & Pursuit racing will be a combined fleet (i.e. all yachts) unless stated in any additional daily instructions.
- 9.5** LBYC reserves the right to delete, amend or combine divisions, as deemed necessary by racing fleet activity.
- 9.6** The club handicap is a formula-derived performance handicap that may adjust after each race based on the performances for the race and any prior races as per the LBYC handicap policy. Different handicaps will be maintained for General, Short-handed, Sprint and Pursuit racing.
- 9.7** As per the club rules, major alterations to any boat that may affect the performance of such craft that are racing shall be immediately reported to the Vice Commodore, who shall note these alterations so that the appropriate amendments can be made for handicaps.
- 9.8** The following tables show each series that will be scored and the scheduled number of races in the series.
- a)** Combined and Cruising Division Championship
- Spring (6)
 - Summer (6)
 - Sprint (1 day up to 3 races)
 - Long Harbour - one of which Includes the Island Bay Race (3)

Winter (6)

b) Friday Night Pursuit Series A, B & C (No Spinnaker) (21)

c) Non-Championship Series

Single-handed (4)

Two-handed (3)

Night (1)

9.9 The minimum number of races to be completed for a series shall be one.

9.10 For any individual series (including the Friday Night Pursuit), when fewer than six races have been completed, a yacht's series score will be the total of her race scores.

9.11 When six or more races have been completed, a yacht's series score will be the total of her race scores excluding her worst score.

9.12 The Season Championship comprises all races scored in the Spring, Summer, Long Harbour and Winter Series; and the completed race day total score in the Sprint Series.

9.13 When fewer than 14 races have been completed, a yacht's score will be the total of her race scores from each race in the Spring, Summer, Sprint, Long Harbour and Winter series. If a yacht does not have a series score in one or more of those series, her score for those series races will be the number of yachts in the Season Championship plus one.

9.14 When 14 races have been completed, a yacht's score will be the total of her race scores from each race in the Spring, Summer, Sprint, Long Harbour and Winter series excluding her worst score, with a further worst score excluded after 16 races, and every two races thereafter.

9.15 The Pursuit Championship comprises all races scored in Pursuit Series A, B and C.

9.16 When fewer than 13 races have been completed, a yacht's score will be the total of her race scores from each race in the Pursuit A, B, and C series. If a boat does not have a series score in one or more of those series, her score for those series will be the total number of yachts in the Pursuit Championship plus one.

9.17 When 13 races have been completed, a yacht's score will be the total of her race scores in the Pursuit A, B and C series excluding her worst score, with a further worst score excluded after 15 races, and every two races thereafter.

10 Prizes

10.1 LBYC may award trophies for the winners of specific races, series or divisions, or sections within a race or series.

10.2 Series and Season Championship trophies will be awarded at the LBYC prize giving. All trophies are to remain on the LBYC premises. A list of trophy winners from the previous season will appear in the Almanac.

11 Insurance

11.1 Each yacht that races shall be insured with valid third-party liability insurance with a minimum cover of \$1,000,000 per event.

12 Disclaimer of Liability

12.1 All those taking part in LBYC races or any other sailing events controlled by the LBYC, as between the LBYC and each of those so taking part, do so at their own risk and responsibility and the LBYC and any sponsor associated with this event has no liability for any damage, loss or any penalty suffered by any boat, crew or any other person taking part in such events. The LBYC and any sponsor associated with this event shall not be responsible for the seaworthiness of a boat whose entry is accepted and/or the sufficiency and/or adequacy of its equipment or the competence of its skipper or crew. The LBYC will not accept any liability for material damage or personal injury or death sustained in conjunction with any LBYC race, including but not limited to the time prior to, during or after the race. The LBYC reserves the right in its sole and uncontrolled discretion to refuse any entry.

13 Further Information

13.1 For further information, please contact info@lbyc.org.nz or visit www.lbyc.org.nz.



Crewcut - Cruising Division Season Champion

SAILING INSTRUCTIONS: 2020 / 2021 SEASON

September 2020 - -August 2021

The Organising Authority is the Lowry Bay Yacht Club Incorporated (LBYC)

Seaview Marina, 100 Port Road, Lower Hutt | Tel (04) 568 3715

Website: www.lbyc.org.nz | Email: info@lbyc.org.nz | VHF: CH 62

1 Rules

- 1.1** The race will be governed by the Rules as defined in the Racing Rules of Sailing (RRS).
- 1.2** The Yachting New Zealand Safety Regulations (as below) shall apply:
 - a)** Part II Category 5 shall apply for keel boats and multihulls. In addition shall carry a suitable bosun's chair.
 - b)** Part V Category C shall apply for trailer yachts.
 - c)** Part VI Category B shall apply for sports boats.
- 1.3** Yachts complying with paragraph 1.2 (a), (b) or (c) shall carry a serviceable inboard or outboard engine and propeller capable of driving the yacht in smooth water at a speed exceeding 4 knots.
- 1.4** Despite paragraph 1.2, any yacht may compete without an engine with the prior express permission of the race committee. The race committee will only give permission if there is a support boat available, and may require an additional support boat to be available. A decision to give permission or not and any failure of the race committee to provide an additional support boat, will not be grounds for redress. This changes RRS 62.1(a).
- 1.5** Crew and skipper shall wear lifejackets at all times, unless the person-in-charge of the yacht considers that conditions are such that there is no significant increase in the risk of safety to any person through not wearing a life-jacket, and expressly gives permission for lifejackets not to be worn.
- 1.6** All yachts shall carry Wellington Harbour Chart NZ4633.
- 1.7** All boats must have a VHF radio that can be heard on deck, on channel 62 or alternative channel if nominated by the Race Officer at all times while racing and must be able to respond if called.
- 1.8** RRS 52 'Manual Power' shall not apply.

- 1.9** RRS 51 shall not apply to the adjustment of a canting keel or water ballast. Lifting keels must be locked down at all times while racing.
- 1.10** The Wellington Regional Council Navigation and Safety Bylaws will apply.
- 1.11** Appendix T will apply.
- 1.12** Yachts may be required to operate a smartphone based tracking device at the yacht's own cost. If so required, yachts shall follow the operating instructions provided by the race committee.
- 1.13** For the Cruising division, Single-handed Series and Friday night Pursuit Series, no spinnakers or extras may be set. Extras are defined as sails not normally used to advance to windward. Headsails may be poled out but shall only be carried on a permanent load bearing forestay with only one headsail per forestay. A yacht that uses a spinnaker or extras in breach of this instruction will be disqualified without a hearing. This changes rule 63.1.
- 1.14** From time to time the race committee may require a yacht to conduct compliance checks on another yacht. Compliance checks may include safety, measurement and/or membership checks

2 Notices to Competitors

- 2.1** Notices to competitors will be posted on the official noticeboard located in the Lowry Room of LBYC and may also be posted on the LBYC website.

3 Changes to Sailing Instructions

- 3.1** Any change to the Sailing Instructions will be posted on the LBYC website and noticeboard at least one hour prior to it taking effect, on the day it takes effect, except that any change to the schedule of races will be posted by 1900 hours on the day before it takes effect.
- 3.2** With the posting of an amendment, code flag 'L' shall be displayed at the LBYC clubhouse until after the first race affected by that amendment and this may be accompanied by one sound signal.
- 3.3** For any event, LBYC may issue a separate set of Sailing Instructions that may replace, modify or supplement these Sailing Instructions.

4 Signals made ashore

- 4.1** Signals made ashore shall be displayed from the Wharf Signal Building and/or the LBYC flagpole. The existence of signals having been made ashore may also be broadcast periodically on VHF radio channel 62.
- 4.2** When the AP flag is displayed at the clubhouse “1 minute” is replaced with “not less than 30 minutes”.
- 4.3** When code flag Y is displayed ashore or on the start boat, RRS 40 (which requires lifejackets to be worn) applies at all times while afloat.
- 4.4** The race committee may abandon a race prior to the starting signal by posting a notice on the LBYC website and noticeboard. This changes RRS 27.3.

5 Schedule

- 5.1** The schedule of races is detailed in ‘Racing Documents’ on the LBYC website and in the LBYC almanac. Racing dates are also detailed in the LBYC website calendar, LBYC email newsletters and/or LBYC social media. Where there is a discrepancy, the schedule in the ‘Racing Documents’ prevails.
- 5.2** An orange flag or shutter will be displayed with one sound signal at least five minutes before the warning signal to alert boats that a race or sequence will begin soon.
- 5.3** On any race day that has two or more races, the orange flag will be displayed before the next race.
- 5.4** One extra race per day may be sailed provided no division becomes more than one race ahead of schedule.

6 Classes and Class Flags

- 6.1** The LBYC Season Championship races will be sailed under the following divisions and class flags.
Combined Division – yellow shutter or flag
Cruising Division – purple shutter or flag
- 6.2** The race committee reserves the right to delete, amend or combine divisions, as deemed necessary by racing fleet activity.

- 6.3** Non-championship races will be sailed as a combined division of all yachts.
- 6.4** In the following LBYC Series, yachts are required to nominate on their entry form, the division in which they will be competing in.
- Spring Series
 - Summer Series
 - Long Harbour Series
 - Sprint Series
 - Winter Series
- 6.5** Yachts changing divisions during a series shall be recorded as DNC for their nominated division for that race. They shall be given a result for the race in the division they sailed in, but that result shall be excluded for the purpose of calculating Series and Season Championship results.
- 6.6** Yachts wishing to change divisions during a season shall submit an additional entry form to the Vice Commodore.
- 6.7** In the following series or races, yachts race as a combined keelboat/trailer yacht fleet. Races will be started using a yellow shutter or flag unless otherwise specified.

Friday Night Pursuit Series, Two-handed Series, Single-handed Series, Women's Helm Race, Youth Race, Night Race Series, Any cruising event races

7 Racing Area and Courses

- 7.1** All racing will be held within Wellington Harbour, including the South Coast as far as Island Bay.
- 7.2** Windward–leeward, triangle and/or harbour courses may be sailed.
- 7.3** The course diagram and descriptions printed in the LBYC Almanac and on the website show the courses, the order in which marks are to be passed, and the side on which each mark is to be left.
- 7.4** The courses for each division will be displayed on the official notice board at no later than 60 minutes prior to the warning signal for the first race.
- 7.5** Yachts, especially visiting yachts, may request information about the course from Lowry Bay Sports by VHF radio, up to 10 minutes before the first

warning signal of the first race of the day. The Race Officer, Wharf Signal Building and the Start Boat shall not accept any responsibility to respond to requests for course details made by VHF after this time.

- 7.6** The Race Officer shall select a course from the following and display it on the official noticeboard:
- a) Club Courses as specified in the LBYC Almanac.
 - b) A course chosen from a suitable selection of race marks as specified in the LBYC Almanac.
 - c) Windward-leeward or triangular courses around temporary inflatable marks. The course(s) shall be displayed on the official noticeboard or in written supplementary sailing instructions for the race(s) or regatta. Reference to multiple course options shall be numerical numbers i.e. 1, 2, 3, 4, etc.
 - d) A special course, chosen from a suitable selection of race marks and displayed on the official notice board or in written specific sailing instructions for the race(s) or regatta.

8 Marks

- 8.1** The racing marks are described on the race map in the LBYC Almanac and are posted on the LBYC website.
- 8.2** The race marks or buoys may be fixed and/or inflatable, and may have numbers on them.
- 8.3** The Sailing Committee may from time to time display GPS coordinates of the fixed marks on the official noticeboard and website. Competitors must use this coordinate information at their own risk and the Sailing Committee or LBYC will accept no responsibility for the accuracy of any information given or the drift of race marks.
- 8.4** A temporary buoy may be laid and called mark 'A' and will be described on the official noticeboard along with the course.

9 Areas that are Obstructions

- 9.1** The following areas are obstructions:
- a) a line between the northern end of Mokopuna Island and the reef extending to the North approximately 100m.

- b) a line between Point Jerningham light and the nearest point of land at Point Jerningham.
- c) The stretch of water between Mokopuna Island and Somes Island whilst racing.
- (d) 100m from Point Howard Oil wharf. (200m if there is a tanker berthed there.)

10 The Start

- 10.1** With the exception of Pursuit races, all races will be started in accordance with RRS 26 except that appropriately coloured shutters may replace flags.
- 10.2** Starting Lines:
 - a) LBYC Wharf Signal Building: A line between the orange shutter and the sight line on the Wharf Signal Building window and the start mark laid to the western side of the Wharf Signal Building.
 - b) On the water: A line between a staff displaying an orange flag on the start boat at the starboard end and the start mark at the port end.
- 10.3** A buoy may be trailed from the start boat. No boat shall pass between this buoy and the start boat.
- 10.4** Yachts whose warning signal has not been made shall avoid the starting area.
- 10.5** A yacht starting later than 20 minutes after her starting signal shall be scored Did Not Start (DNS) without a hearing. This changes RRS Appendix A4. Any late starting yacht must not interfere with yachts starting in a later division.
- 10.6** If any part of a yacht's hull, crew or equipment is on the course side of the starting line at the start signal, the race committee may attempt to broadcast her name and/or sail number on VHF radio channel 62. Failure to make a broadcast will not be grounds for a request for redress. This changes RRS 62.1(a).
- 10.7** An additional description of the start line will be on the noticeboard if it is not a Wharf Signal Building start.
- 10.8** The official time used for starts shall be GPS time.
- 10.9** Pursuit Starts

- a) Start times will be posted on the official noticeboard in the clubrooms not later than 60 minutes before the first warning signal on the day of the first race.
- b) Yachts start on a pre-allocated time and numbering sequence in accordance with their handicap.
- c) For yachts starting after the limit yachts (first start time), a preparatory signal of their start number in the Wharf Signal Building window accompanied by one sound signal shall be displayed one minute before each yacht's starting time. Each start shall be indicated by the lowering of their start number accompanied by one sound signal. This changes RRS 26.
- d) Where the Wharf Signal Building is not staffed, competing yachts in Pursuit races may be requested to make their own start in accordance to their pursuit start time as advertised on the LBYC noticeboard. Competing yachts are requested to record their own finishing time and report this along with her position in relation to nearby yachts to the Race Officer or race committee.
- e) The race committee may broadcast details of yachts due to start on VHF radio channel 62.
- f) All yachts must cease engine propulsion 5 minutes before their start.

11 Change of the Next Leg of the Course

- 11.1** To change the next leg of the course, the race committee will move the original mark (or the finishing line) to a new position, shall signal that change by displaying code flag C, and make an announcement by VHF radio at least twice. (An acknowledgement of changed course will be asked of the leading yachts only.) This changes RRS 33. Failure of any yacht to respond to such change shall not be grounds for protest or redress.

12 Missing Mark

- 12.1** If a mark is missing or out of position, the race committee may replace it and announce the new mark's description and approximate position on VHF radio channel 62. The new mark may or may not display code flag M. This changes RRS 34.

- 12.2** If the missing mark is known prior to the warning signal, the Race Committee shall inform the fleet of the new course on VHF radio channel 62.

13 Shortening the Course

- 13.1** Instead of displaying flag ‘S’ with two sounds, a race may also be shortened in accordance with RRS 32.2 by an announcement on VHF radio channel 62. This changes RRS 32.2.
- 13.2** Alternatively, a race may be shortened by an announcement on VHF radio channel 62 or by displaying code flag V at a mark, directing yachts to round a particular mark of the course and proceed directly to and cross the course finishing line for that race. In this case, RRS 32.2 will not apply.

14 The Finish

14.1 Finishing Lines:

- a)** LBYC Wharf Signal Building: A line between the blue shutter and the sight line on the Wharf Signal Building window and the starting mark laid to the western side of the Wharf Signal Building. If no mark is laid, the line shall be an extension of the line between the Wharf Signal Building window sight line and the Northern tip of Matiu/Somes Island.
- b)** On the water: A line between a staff displaying a blue flag on the finish boat, at one end and finishing mark at the other end

- 14.2** If the race committee is absent when a yacht finishes, each yacht shall record and report their finishing time, and her position in relation to nearby yachts, to the Race Officer or by email to: vicecomm@lbyc.co.nz.

- 14.3** Any yacht recording its own finishing time in accordance with instruction 14.2 that does not provide a declaration identifying the yacht, the race and the finishing time within 24 hours of its finishing time shall be scored Did Not Finish (DNF) without a hearing.

- 14.4** An additional description of the finish line will be on the noticeboard if it is not a Wharf Signal Building finish.

15 Time Limits

- 15.1** Time limits for LBYC general club racing shall be 3 hours for the lead yacht of each division and yachts failing to finish within 90 minutes after the first yacht sails the course and finishes will be scored Did Not Finish (DNF).
- 15.2** Time limits for LBYC scheduled back-to-back racing shall be 90 minutes for the lead yacht of each division and yachts failing to finish within 20 minutes after the first yacht sails the course and finishes will be scored DNF.
- 15.3** Time limits for coastal racing (including Long Harbour races) shall be 5 hours for the lead of each division and yachts failing to finish within 120 minutes after the first yacht sails the course and finishes will be scored DNF.
- 15.4** If no yachts have passed the first mark of a Long Harbour course within 90 minutes after the start, the race will be abandoned. Failure to meet the target time will not be grounds for redress. This changes RRS 62.1(a).

16 Protests and Requests for Redress

- 16.1** Protest forms are available from the LBYC clubrooms and shall be delivered to the Race Officer or a member of the Sailing Committee within the protest time limit.
- 16.2** The protest time limit for a protest by a yacht is 90 minutes after the last yacht, regardless of its division, has finished the last race of the day. The same time limit applies to all classes or divisions. This changes RRS 61.3 and RRS 62.2.
- 16.3** Notices will be posted within 30 minutes of the protest time limit to inform competitors of hearings in which they are parties or named as witnesses.
- 16.4** For protests where only a rule of Part 2, When Yachts Meet, or RRS 31, Touching a Mark, is alleged to have been broken, an arbitration hearing may be offered prior to any formal hearing.
- 16.5** RRS 44.1 is changed to permit a yacht that has broken a rule of Part 2 or RRS 31 to take a penalty after racing but prior to any protest hearing. This penalty will only apply in accordance with arbitration decisions. Her penalty shall be a scoring penalty as calculated in RRS 44.3(c) equal to 40% of the

number of entries in her fleet or 50% of the difference between her finishing position and the number of entries in her fleet, whichever is less.

- 16.6** Protests will normally be held at the LBYC clubrooms at 1930 hours on the first Tuesday after the race, unless otherwise notified.
- 16.7** Breaches of instructions 4.3, 19, 21 and 22.4 shall not be grounds for protest by a yacht. This changes RRS 60.1(a).

17 Scoring

- 17.1** Races will be scored on General Handicap, PHRF and Line.
- 17.2** Championship racing will be for the Combined Division and Cruising Division (Non- spinnakers).
- 17.3** Series Scores; only series entrants will be eligible for series scores.
- 17.4** Non-championship & Pursuit racing will be a combined fleet (i.e. all yachts) unless stated in any additional daily instructions.
- 17.5** LBYC reserves the right to delete, amend or combine divisions, as deemed necessary by racing fleet activity.
- 17.6** A division or race will not be scored unless two or more yachts start in that division or race.
- 17.7** The club handicap is a formula-derived performance handicap that may adjust after each race based on the performances for that race and any prior races as per the LBYC handicap policy. Different handicaps will be maintained for General, Short-handed, Sprint and Pursuit racing.
- 17.8** PHRF results will be calculated for all yachts with a valid PHRF handicap, unless the yacht advises the race committee that it is not sailing in its measured configuration.
- 17.9** As per club rules, any alterations to any boats that may affect the performance of such craft that are racing shall be immediately reported to the Vice Commodore, who shall note these alterations so that the appropriate amendments can be made for handicaps.
- 17.10** The minimum number of races to be completed for a series shall be one.
- 17.11** For any individual series (including the Friday Night Pursuit), when fewer than six races have been completed, a yacht's series score will be the total of her race scores.

- 17.12** When six or more races have been completed, a yacht's series score will be the total of her race scores excluding her worst score.
- 17.13** The Season Championship comprises all races scored in the Spring, Summer, Long Harbour and Winter Series; and the completed race day total score in the Sprint Series.
- 17.14** When fewer than 15 races have been completed, a yacht's score will be the total of her race scores from each race in the Spring, Summer, Sprint, Long Harbour and Winter series. If a yacht does not have a series score in one or more of those series, her score for those series races will be the number of yachts in the Season Championship plus one.
- 17.15** When 15 races have been completed, a yacht's score will be the total of her race scores from each race in the Spring, Summer, Sprint, Long Harbour and Winter series excluding her worst score, with a further worst score excluded after 17 races, and every two races thereafter.
- 17.16** The Pursuit Championship comprises all races scored in Pursuit Series A, B and C.
- 17.17** When fewer than 13 races have been completed, a yacht's score will be the total of her race scores from each race in the Pursuit A, B, and C series. If a boat does not have a series score in one or more of those series, her score for those series will be the total number of yachts in the Pursuit Championship plus one.
- 17.18** When 13 races have been completed, a yacht's score will be the total of her race scores in the Pursuit A, B and C series excluding her worst score, with a further worst score excluded after 13 races, and every two races thereafter.

18 Safety Regulations

- 18.1** A yacht that retires from a race shall notify Lowry Bay Sports as soon as possible on VHF radio channel 62.
- 18.2** Navigational Requirements
- a)** All yachts must comply with Rule 4.3 of the Navigational and Safety By-laws- Wellington Region:- "Where possible the master of a vessel must not allow that vessel to approach within 200m of an oil tanker or any other vessel showing a flag B by day or a red all-round light at night"

- b) Yachts are reminded of their obligations to give way to vessels over 500 tonnes (Interisland Ferries etc.), and are instructed to keep a safe distance from these vessels.
- c) Neither the Race Officer, nor the Sailing Committee will accept any protest lodged by competitors of a third party regarding the above safety requirements.
- d) However, if the Captain or Officers, the Harbour Master, or an official from Wellington Regional Council or Beacon Hill Radio lays a complaint against a particular identified yacht(s), the Sailing Committee will investigate the matter and if justified, disqualify that/those yacht(s) from that race.

19 Equipment and Measurement Checks

- 19.1** Any yacht or equipment may be inspected at any time for compliance with safety requirements, class rules, rating certificates and/or the Sailing Instructions.
- 19.2** A yacht required by the race committee to conduct compliance checks on another yacht is deemed to be a race committee measurer.
- 19.3** If required by a race committee measurer, a yacht must:
 - a) proceed immediately to a designated area for inspection; and
 - b) leave all equipment including sails, sheets and lifelines in the configuration in which it completed the race.
- 19.4** The race committee may require a yacht to undertake a conduct compliance check on itself. If so required, the yacht will complete the compliance check form and return it to the race committee by the time specified.
- 19.5** A yacht that is racing in a measurement configuration that is at variance to the issued PHRF certificate or these Sailing Instructions may be subject to protest.

20 Advertising

- 20.1** Yachts may be required to display advertising supplied by LBYC.

21 Disposal of Trash

- 21.1** Yachts shall not put trash in the water.

22 Radio Communication

- 22.1** All radio communication between competitors and the race committee shall be through VHF radio channel 62, unless the race committee determines otherwise.
- 22.2** Yachts shall maintain a listening watch on VHF radio channel 62 or on an alternative channel as provided in 22.1. The failure to receive a radio message from the race committee will not be grounds for redress. This changes RRS 62.1(a).
- 22.3** If the VHF aerial on the yacht is on the top of the mast it is strongly recommended that you carry a charged VHF handheld radio in case of dismasting.
- 22.4** Except in an emergency, a yacht shall neither make radio transmissions while racing nor receive radio communications not available to all yachts. This restriction also applies to use of mobile telephones.
- 22.5** Yachts may receive and use any information freely available to all yachts, and any publicly offered internet or broadcast weather information from sources available to all competitors (whether on a subscription or free basis). Permitted sources of information must provide the same information to all competitors who seek it. Competitors may use any means to retrieve information. This changes RRS 41.

23 Prizes

- 23.1** LBYC may award trophies for the winners of specific races, series or divisions, or sections within a race or series.
- 23.2** Series and Season Championship trophies will be awarded at the LBYC prize giving. All trophies are to remain on the LBYC premises. A list of trophy winners from the previous season will appear in the Almanac.

24 Insurance

- 24.1** Each yacht that races shall be insured with valid third party liability insurance with a minimum cover of \$1,000,000 per event.

25 Disclaimer of Liability

- 25.1** All those taking part in LBYC races or any other sailing events controlled by the LBYC, as between the LBYC and each of those so taking part, do so at their own risk and responsibility and the LBYC and any sponsor associated with this event has no liability for any damage, loss or any penalty suffered by any boat, crew or any other person taking part in such events. The LBYC and any sponsor associated with this event shall not be responsible for the seaworthiness of a boat whose entry is accepted and/or the sufficiency and/or adequacy of its equipment or the competence of its skipper or crew. The LBYC will not accept any liability for material damage or personal injury or death sustained in conjunction with any LBYC race, including but not limited to the time prior to, during or after the race. The LBYC reserves the right in its sole and uncontrolled discretion to refuse any entry.

26 Further Information

- 26.1** For further information, please contact vicecomm@lbyc.org.nz or visit www.lbyc.org.nz.



pulse

Description of marks

- No 1 Laid windward mark: cylindrical orange buoy with number affixed
- No 2 Laid windward or wing mark: cylindrical orange buoy with number affixed
- No 3 Laid leeward mark: cylindrical orange buoy with number affixed
- No 4 Ngauranga buoy
- No 5 Somes Island buoy
- No 6 Number One leading light (41 19.060S 174 51.350E)
- No 7 Barrett Reef buoy (41 21.140S 174 50.110E)
- No 8 Evans Bay buoy – located anywhere in Evans Bay
- No 9 Point Jerningham buoy – laid in the vicinity of Point Jerningham
- No 10 Falcon Shoal buoy
- No 11 Korokoro buoy
- No 12 Ward Island buoy
- No 13 Island Bay Inner buoy – laid between Barrett Reef and Island Bay
- No 14 Island Bay Outer buoy – laid between Barrett Reef and Island Bay
- No 15 Point Halswell buoy – laid in the vicinity of Point Halswell
- No 17 Mahina Bay buoy
- No 18 Days Bay buoy
- No 19 Petone Wharf buoy
- No 20 Northern Somes Island buoy
- No 21 Seaview buoy
- No 23 Jessie Street buoy
- No 24 South Eastern Somes Island buoy
- No 25 Fixed light ('Shoal Pile') at southern end of Evans Bay (41 18.610S 174 48.430E)
- No 27 South Somes buoy – laid to the south of Somes Island
- No 28 Baring Head buoy – laid in the vicinity of Baring Head

CLUB COURSES

Please refer to Sailing Instructions for Start/Finish line definitions.

S = start F = finish p = round to port s = round to starboard

FN = suitable for Friday Night pursuit races.

Cruise = a Cruising Division course

NT = not suitable if tanker is on fuel berth.

Race officers are strongly encouraged to use one of the club courses listed below. Some of the courses listed as NT may be adapted to avoid the tanker by laying a mark A to the south-west of the LBYC Wharf Signal Building.

Target times are only approximate for working out which course to set in which wind conditions.

Light winds up to 8kts, medium winds 8–18kts, heavy 18kts+

When there is no time next to a course number, this course would be above 3 hr time limit.



String Theory

Northerly courses

Time to sail course in hours

No	Course	NM	Wind	Notes	Light	Medium	Heavy
1	S 21p 20p 21s F	3.5	NE		1	0.75	0.5
2	S 23p 17p F	3.75	N		1	0.75	0.5
3	S 23p 20p 21s F	3.75	NE		1.25	0.8	0.6
4	S 23p 24p 21s F	4.5	N		1.5	1	0.7
5	S 21p 24p 23s F	4.5	NE		1.5	1	0.7
6	S 23p 18p F	4.8	N		1.5	1	0.7
7	S 23p 24p 23s F	4.8	N		1.5	1	0.7
8	S 23p 24p 18p F	5.5	N		2	1.25	0.8
9	S 23p 24s 19s F	5.5	N		2	1.25	0.8
10	S 19p 24p 23s F	5.5	NW		2	1.25	0.8
11	S 19p 18p F	5.75	NW		2	1.3	0.8
12	S 19p 20p 19p 20p 21s F	6.2	N		2.2	1.25	1
13	S 19p 24p 18p F	6.2	NW		2.2	1.25	1
14	S 21p 24s 19p 20p 21s F	6.3	NW		2.2	1.25	1
15	S 19p 24p 20p 24p 21s F	6.4	NW		2.25	1.3	1
16	S 21p 24p 21p 24p 21s F	6.5	NE		2.25	1.3	1
17	S 19p 24p 20p 24p 23p F	6.6	N		2.25	1.3	1
18	S 23p 24p 23p 24p 21s F	6.7	N		2.3	1.4	1
19	S 19p 26p 18p F	6.7	N		2.5	1.5	1.25
20	S 19p 20p 19p 24p 21s F	7.00	NW		2.3	1.4	1
21	S 21p 24s 19p 20s 19s F	7.1	N		2.3	1.4	1.1
22	S 19p 12p F	7.2	N		2.4	1.5	1.1
23	S 23p 17p 23p 17p F	7.3	NW		2.4	1.5	1.1
24	S 19p 18p 23s F	7.6	NW		2.5	1.5	1.2
25	S 23p 24p 23p 24p 23s F	7.6	NE		2.5	1.5	1.2
26	S 23p 12p 23s F	8.0	N		2.7	1.6	1.25
27	S 19p 24p 19p 24p 21s F	8.0	N		2.7	1.6	1.25
28	S 19p 18p 19s F	8.4	NW		2.8	1.7	1.3
29	S 23p 24s 19p 24s 19s F	8.5	N		2.8	1.7	1.3
30	S 19p 12p 23s F	8.7	N		2.9	1.75	1.4
31	S 23p 24p 18p 23p 18p F	9.85	N		2	1.6	
32	S 19p 22s 24s 18p F	10.2	N			2.1	1.7
33	S 19p 24p 18p 23p 18p F	10.5	N			2.1	1.7
34	S 19p 12p 19p 20p 23s F	10.7	N			2.2	1.75
35	S 23p 24p 12p 23s 18p F	10.9	N			2.25	1.75
36	S 19p 24p 18p 19p 18p F	11.2	NW			2.5	1.8
37	S 19p 12p 19p 18p F	12	NW			2.7	2
38	S 19p 12p 19p 12p F	13.6	NW			2.9	2.25

SOUTHERLY COURSES

Time to sail course in hours

No	Course	NM	Wind	Notes	Light	Medium	Heavy
39	S 17p 23s F	3.7	SE		1.2	0.75	0.5
40	S 18p 21s F	4.25	SE		1.4	0.9	0.6
41	S 17s 24s 23s F	4.7	SE		1.6	0.9	0.75
42	S 18p 23s F	4.8	S		1.6	0.9	0.75
43	S 18s 24s 23s F	5.4	S		1.8	1.1	0.8
44	S 12s 24s F	5.6	S		1.8	1.1	0.8
45	S 18p 19s F	5.7	SE		1.9	1.1	0.9
46	S 24s 21s 24s 21s F	6.0	SW		2.0	1.25	0.9
47	S 24s 23p 20s 19s F	6.1	SW		2.0	1.25	0.9
48	S 17p 21p 17p 21s F	6.2	SE		2.1	1.25	1.0
49	S 24s 23s 24s 21s F	6.2	SW		2.1	1.25	1.0
50	S 12p 23s F	6.3	S		2.1	1.25	1.0
51	S 18s 26s 19s 21s F	6.7	S		2.5	1.5	1.25
52	S 12p 24s 23s F	6.6	S		2.2	1.3	1.1
53	S 17s 23s 17s 23s F	7.1	SE		2.4	1.4	1.1
54	S 12p 19s F	7.1	S		2.4	1.4	1.1
55	S 22p 23s F	7.2	S		2.4	1.4	1.1
56	S 18p 23p 18p F	7.6	SE		2.5	1.5	1.2
57	S 18s 24s 18s 23s F	7.7	SE		2.6	1.6	1.2
58	S 18p 19p 18p F	8.4	SE		2.8	1.7	1.3
59	S 12p 19p 24p 23s F	9.5	S			1.9	1.5
60	S 18p 19p 18p 21s F	9.6	SE			1.9	1.5
61	S 18s 23s 18s 24s 23s F	10	SE			2.0	1.6
62	S 18p 19p 18p 23s F	10.2	SE			2.0	1.6
63	S 12p 23p 12p F	10.7	S			2.1	1.6
64	S 12p 23p 18s 24s 23s F	11.6	S			2.3	1.8
65	S 12p 19p 12p 21s F	12.3	S			2.5	1.9
66	S 12p 19p 12p 24s 23s F	13.1	SE			2.6	2.1

PROGRAMME OF RACES

2020 / 2021 SEASON

September 2020 – August 2021

September 2020

Fri 18 **Skipper's Briefing**

Start: 1900

<i>Crew:</i>
<i>Wind:</i>
<i>Sails:</i>
<i>Notes:</i>

Sat 19 **Interclub Series Race Day 1 – RPNYC Opening Day**

Start: 1300 Open Day Race

<i>Crew:</i>
<i>Wind:</i>
<i>Sails:</i>
<i>Notes:</i>

Sun 27 **LBYC Opening Ceremony & Opening Day Race**

Spring Series Race Day 1

Interclub Series Race Day 2

Start: 1030 Ceremony

Start: 1300 Open Day Race

Duty Boat: Kama II

<i>Crew:</i>
<i>Wind:</i>
<i>Sails:</i>
<i>Notes: Daylight Savings begins</i>

October 2020

Fri 02 **Pursuit A Race Day 1**
Start: 1815 *Duty Boat: Sika II*

<i>Crew:</i>
<i>Wind:</i>
<i>Sails:</i>
<i>Notes:</i>

Sun 04 **Two-Handed Race Day 1 & Spring Series Race Day 2**
Start: 1000 **Two-Handed** *Duty Boat: Minika*
Start: 1300 **Spring Series**

<i>Crew:</i>
<i>Wind:</i>
<i>Sails:</i>
<i>Notes:</i>

Fri 09 **Pursuit A Race Day 2**
Start: 1815 *Duty Boat: Quetzalli*

<i>Crew:</i>
<i>Wind:</i>
<i>Sails:</i>
<i>Notes:</i>

Sat 10 **Interclub Series Race Day 3 – EBYMBC Opening Day**
Start: TBA

<i>Crew:</i>
<i>Wind:</i>
<i>Sails:</i>
<i>Notes:</i>

Sun 11 **Cruising Event**
Start: TBA

Fri 16 **Pursuit A Race Day 3**
Start: 1815 *Duty Boat: Crewcut*

<i>Crew:</i>
<i>Wind:</i>
<i>Sails:</i>
<i>Notes:</i>

Sun 18 **Two-Handed Race Day 2 & Spring Series Race Day 3**
Start: 1000 **Two-Handed** *Duty Boat: Sika II*
Start: 1300 **Spring Series**

<i>Crew:</i>
<i>Wind:</i>
<i>Sails:</i>
<i>Notes:</i>

Fri 23 **Pursuit A Race Day 4**
Start: 1815 *Duty Boat: True Blue*

<i>Crew:</i>
<i>Wind:</i>
<i>Sails:</i>
<i>Notes:</i>

Sat 24 – Mon 26 Labour Weekend Cruising Event
Details to be advised

Fri 30 **Pursuit A Race Day 5**
Start: 1815 *Duty Boat: Kaea*

<i>Crew:</i>
<i>Wind:</i>
<i>Sails:</i>
<i>Notes:</i>

NOVEMBER 2020

Sun 01 **Two-Handed** Race Day 3 & **Spring Series** Race Day 4
Start: 1000 **Two-Handed** *Duty Boat: Squid Vicious*
Start: 1300 **Spring Series**

<i>Crew:</i>
<i>Wind:</i>
<i>Sails:</i>
<i>Notes:</i>

Fri 06 **Pursuit A** Race Day 6
Start: 1815 *Duty Boat: Chickadee*

<i>Crew:</i>
<i>Wind:</i>
<i>Sails:</i>
<i>Notes:</i>

Sun 08 **Two-Handed** Reserve Day & **Spring Series** Race Day 5
Start: 1000 **Two-Handed** *Duty Boat: White Heat*
Start: 1300 **Spring Series**

<i>Crew:</i>
<i>Wind:</i>
<i>Sails:</i>
<i>Notes:</i>

Fri 13 **Pursuit A** Race Day 7
Start: 1815 *Duty Boat: Masterpiece*

<i>Crew:</i>
<i>Wind:</i>
<i>Sails:</i>
<i>Notes:</i>

Sun 15 **Spring Series** Race Day 6
Start: 1300 **Spring Series** *Duty Boat: Shardik*

<i>Crew:</i>
<i>Wind:</i>
<i>Sails:</i>
<i>Notes:</i>

Fri 20 **Pursuit B** Race Day 1
Start: 1815 *Duty Boat: Amnesty*

<i>Crew:</i>
<i>Wind:</i>
<i>Sails:</i>
<i>Notes:</i>

Sun 22 **Youth Race**
Start: 1300 *Duty Boat: True Blue*

<i>Crew:</i>
<i>Wind:</i>
<i>Sails:</i>
<i>Notes:</i>

Fri 27 **Pursuit B** Race 2
Start: 1815 *Duty Boat: Kama II*

<i>Crew:</i>
<i>Wind:</i>
<i>Sails:</i>
<i>Notes:</i>

Sun 29 **LBYC Fun Race**
Start: TBA

DECEMBER 2020

Fri 04 Pursuit B Race 3

Start: 1815 *Duty Boat: Vortex*

<i>Crew:</i>
<i>Wind:</i>
<i>Sails:</i>
<i>Notes:</i>

Sun 06 Teams Race

Start: TBA

<i>Crew:</i>
<i>Wind:</i>
<i>Sails:</i>
<i>Notes:</i>

Fri 11 Pursuit B Race 4

Start: 1815 *Duty Boat: Pulse*

<i>Crew:</i>
<i>Wind:</i>
<i>Sails:</i>
<i>Notes:</i>

Sun 13 Women's Race

Start: 1300 *Duty Boat: Amnesty*

<i>Crew:</i>
<i>Wind:</i>
<i>Sails:</i>
<i>Notes:</i>

Fri 18 Pursuit B Race Day 5

Start: 1815 *Duty Boat: 2 Low 4 Zero*

<i>Crew:</i>
<i>Wind:</i>
<i>Sails:</i>
<i>Notes:</i>

Sun 20 **Cruising Event** – Details to be advised

Happy Christmas Cruising

JANUARY 2021

Fri 15 **Pursuit B Race Day 6**

Start: 1815 *Duty Boat: Ross Child*

<i>Crew:</i>
<i>Wind:</i>
<i>Sails:</i>
<i>Notes:</i>

Sun 17 **Cruising Event** – Details to be advised

Fri 22 **Pursuit B Race Day 7**

Start: 1815 *Duty Boat: Out to Lunch*

<i>Crew:</i>
<i>Wind:</i>
<i>Sails:</i>
<i>Notes:</i>

Sun 24 **Cruising Event** – Details to be advised

Fri 29 **Night Race**

Start: 2015 *Duty Boat: TBA*

<i>Crew:</i>
<i>Wind:</i>
<i>Sails:</i>
<i>Notes:</i>

Sun 31 **Single-Handed Race Day 1 & Summer Series Race Day 1**

Start: 1000 **Single-Handed** *Duty Boat: Impulsive*

Start: 1300 **Summer Series**

<i>Crew:</i>
<i>Wind:</i>
<i>Sails:</i>
<i>Notes:</i>

February 2021

Fri 5 **Pursuit C Race Day 1**
Start: 1815 *Duty Boat: Code Breaker*

<i>Crew:</i>
<i>Wind:</i>
<i>Sails:</i>
<i>Notes:</i>

Fri 12 **Pursuit C Race Day 2**
Start: 1815 *Duty Boat: Clarebonyant*

<i>Crew:</i>
<i>Wind:</i>
<i>Sails:</i>
<i>Notes:</i>

Sun 14 **Single-Handed Race Day 2 & Summer Series Race Day 2**
Start: 1000 **Single-Handed** *Duty Boat: Testarossa*
Start: 1300 **Summer Series**

<i>Crew:</i>
<i>Wind:</i>
<i>Sails:</i>
<i>Notes:</i>

Fri 19 **Pursuit C Race Day 3**
Start: 1815 *Duty Boat: White Heat*

<i>Crew:</i>
<i>Wind:</i>
<i>Sails:</i>
<i>Notes:</i>

Fri 26 **Pursuit C Race Day 4**
Start: 1815 *Duty Boat: Total Eclipse*

<i>Crew:</i>
<i>Wind:</i>
<i>Sails:</i>
<i>Notes:</i>

Sun 28 **Single-Handed Race Day 3 & Summer Series Race Day 3**
Start: 1000 **Single-Handed**
Start: 1300 **Summer Series** *Duty Boat: Kaea*

<i>Crew:</i>
<i>Wind:</i>
<i>Sails:</i>
<i>Notes:</i>

March 2021

Fri 05 **Pursuit C Race Day 5**
Start: 1815 *Duty Boat: Obsession*

<i>Crew:</i>
<i>Wind:</i>
<i>Sails:</i>
<i>Notes:</i>

Sun 07 **RUM REGATTA**
Start: 1815 *Duty Boat: Sailing Committee*

<i>Crew:</i>
<i>Wind:</i>
<i>Sails:</i>
<i>Notes:</i>

Fri 12 **Pursuit C Race Day 6**
Start: 1815 *Duty Boat: Pulse*

Crew:
Wind:
Sails:
Notes:

Sun 14 **Single-Handed Race Day 4 & Summer Series Race Day 4**
Start: 1000 **Single-Handed**
Start: 1300 **Summer Series** *Duty Boat: Minika*

Crew:
Wind:
Sails:
Notes:

Fri 19 **Pursuit C Race Day 7**
Start: 1815 *Duty Boat: Stunned Mullet*

Crew:
Wind:
Sails:
Notes:

Sun 21 **Single-Handed Reserve Day & Summer Series Race Day 5**
Start: 1000 **Single-Handed**
Start: 1300 **Summer Series** *Duty Boat: Squid Vicious*

Crew:
Wind:
Sails:
Notes:

Fri 26 **24-Hour Endurance Yacht Race Friday Night Invitation Race**
Start: 1815 *Duty Boat: Freedom*

Crew:
Wind:
Sails:
Notes:

Sat 27 – Sun 28 24-Hour Endurance Yacht Race



<i>Crew:</i>
<i>Wind:</i>
<i>Sails:</i>
<i>Notes:</i>

April 2021

Sat 10 – Sun 11 24-Hour Endurance Yacht Race Reserve Day or Summer Series Reserve Day

<i>Crew:</i>
<i>Wind:</i>
<i>Sails:</i>
<i>Notes:</i>

Sun 18 **Long Harbour Series** Race Day 1
Start: 1000 *Duty Boat: Freedom*

<i>Crew:</i>
<i>Wind:</i>
<i>Sails:</i>
<i>Notes:</i>

Sun 25 **ANZAC Day Race**
Start: TBA

<i>Crew:</i>
<i>Wind:</i>
<i>Sails:</i>
<i>Notes:</i>

May 2021

Sun 02 **Long Harbour Series Race Day 2**

Start: 1000 *Duty Boat: Am Meer*

<i>Crew:</i>
<i>Wind:</i>
<i>Sails:</i>
<i>Notes:</i>

Sun 16 **Long Harbour Series Race Day 3**

Start: 1300 *Duty Boat: Chickadee*

<i>Crew:</i>
<i>Wind:</i>
<i>Sails:</i>
<i>Notes:</i>

Sun 23 **Sprint Racing**

Start: 1300 *Duty Boat: Impulsive*

<i>Crew:</i>
<i>Wind:</i>
<i>Sails:</i>
<i>Notes:</i>

Sun 30 **Winter Series Race Day 1**

Start: 1300 *Duty Boat: Synfinity*

<i>Crew:</i>
<i>Wind:</i>
<i>Sails:</i>
<i>Notes:</i>

June 2021

Sun 13 Antarctic Challenge

Start: 1000 *Duty Boat: TBA*

<i>Crew:</i>
<i>Wind:</i>
<i>Sails:</i>
<i>Notes:</i>

Sun 20 Winter Series Race Day 2

Start: 1300 *Duty Boat: Stunned Mullet*

<i>Crew:</i>
<i>Wind:</i>
<i>Sails:</i>
<i>Notes:</i>

July 2021

Sun 04 Winter Series Race Day 3

Start: 1300 *Duty Boat: Pulse*

<i>Crew:</i>
<i>Wind:</i>
<i>Sails:</i>
<i>Notes:</i>

Sun 18 Winter Series Race Day 4

Start: 1300 *Duty Boat: 2 Low 4 Zero*

<i>Crew:</i>
<i>Wind:</i>
<i>Sails:</i>
<i>Notes:</i>

August 2021

Sun 01

Start: 1300

Winter Series Race Day 5

Duty Boat: Bullfinch

Crew:
Wind:
Sails:
Notes:

Sun 15

Start: 1300

Winter Series Race Day 6

Duty Boat: Clarebonyant

Crew:
Wind:
Sails:
Notes:

Sat 21 August 2021 LBYC PRIZE-GIVING

SUMMARY OF RACE PROGRAMME

2020 / 2021 SEASON

Regattas

Rum Regatta - 7 March

24-Hour Endurance Yacht Race - 27 & 28 March

Special Events

Opening Day - 27 September

Youth Race - 22 November

Fun Race - 29 November

Women's Race - 13 December

Antarctic Challenge - 13 June

Prizegiving - 21 August

Spring-Series

27 September

4 October

18 October

1 November

8 November

15 November

Two-Handed Series

4 October

18 October

1 November

8 November

Interclub Series

19 September

27 September

10 October

Summer Series

31 January

14 February

28 February

14 March

21 March

Night Race

29 January

Long Harbour Series

18 April

2 May

16 May

Winter Series

30 May

20 June

4 July

18 July

1 August

15 August

Single-Handed Series

31 January

14 February

28 February

14 March

21 March

Sprint Racing

23 May

Pursuit A

2 October

9 October

16 October

23 October

30 October

6 November

13 November

Pursuit B

20 November

27 November

4 December

11 December

18 December

15 January

22 January

Pursuit C

5 February

12 February

19 February

26 February

5 March

12 March

19 March

RACE OFFICER RESPONSIBILITIES AND DUTIES

- ♦ The Race Officer (RO) is responsible for the complete conduct of the races to which they are appointed.
- ♦ On the Friday Pursuit Races, the duty boat representative is the RO.
- ♦ On Sundays and Wednesdays the RO will be assigned to the race from a RO duty roster. These Race Officers are listed in the LBYC Almanac.
- ♦ The RO should be at the clubrooms to prepare for regular racing, 90 minutes prior to the start.
- ♦ The RO is responsible for raising the club burgee and to check that the marks planned to be used in the race are actually in place on the water.
- ♦ The RO should, if available, write the weather forecast on the race notice board.
- ♦ The RO should call Beacon Hill and check shipping movements, particularly in relation to tankers likely to approach or depart the fuel wharf during the period of a race. In which case, the course should be set so as to keep the fleet well clear of the tanker wharf.
- ♦ The club has several preset courses. Except for the Long Harbour races, the RO will use club courses for routine racing. The course number should be set and displayed on the race notice board 1 hour prior to the scheduled start time. If help is required to select a course the RO should consult a member of the Sailing Committee.
- ♦ The postponement or abandonment of a race is at the RO's discretion and that decision is final. However, members of the Sailing Committee should be consulted where they are available before the final decision is made. Where the Sailing Committee and/or the RO consider the conditions unsuitable, the race will be postponed or abandoned.
- ♦ The RO is responsible for raising the relevant flags on the club's flagpole with sound signals when races are postponed or abandoned.
- ♦ The RO must ensure the start box team is briefed and that the start box team know how the RO can be contacted during the race.
- ♦ The RO is solely responsible for decisions to shorten the course, or abandon a race. In either case the RO is to advise the start box team, whom will

advise the fleet in accordance with the Sailing Instructions and racing rules.

- ♦ The RO is to be available after the race to accept protests. Protests are to be referred by the RO to the Protest Convener, Sailing Administrator or Sailing Secretary.
- ♦ The RO will receive the results from the start box team or sailing administration.

Once results are available the RO is to give a 10-minute warning by using a sound signal the Duty Boat representative or RO will conduct the Kangaroo Court and announce the results.



Kama II



Sika II

MARINE RADIO USE

Rule number one: monitor Channel 16 at all times

Generally, when sailing/boating you should always monitor CH 16. When we are racing, our transmissions are on CH 62 or CH 77 but you should also monitor CH 16 if your radio can dual scan.

All authorities and rescue organisations work CH 16 initially in a Mayday situation. If you are not listening, you might not hear a call and so not be able to help. Monitor any other channels as well, but always 16, as this is the channel the rescue people, commercial boats like the ferries and all land stations monitor. CH 14 is used by commercial operators for inner harbour Trip Reports.

Note: unless in an emergency, operation of a VHF radio legally requires a radio operators licence.

Trip Reports to and from the Sounds

The objective of a Trip Report (TR) is to tell an authority where you are going and when you expect to arrive, so that if something goes wrong you will be helped.

In Wellington and in Cook Strait, reports should be filed with Wellington Maritime Radio. Why? Apart from the fact that they are the prescribed authority, they also have very powerful transmitters and very good ears. This means that if you need help, they are likely to be listening. If you are a member of the Marlborough Nelson Radio Association, you may lodge a TR with them.

Do not use Beacon Hill (Wellington Harbour Radio). They are busy enough with harbour traffic. They will hear and possibly log your TR, but that is not their duty. They are the harbour radio. At night, separately from your TR, you must log your movements in and out of the harbour entrance with Beacon Hill. That is required and will get a response from them telling you of other boat movements. They will also tell others of your movements.

Important note

In addition to a TR, you should always leave details of your trip (a two-minute form is good for this) with someone. Remember to close a TR on arrival, as both Wellington and Marlborough Nelson Radio follow up, to check that a TR is closed with a safe arrival.

How to do a Trip Report

Select CH 16. Say: *Wellington Maritime Radio, Wellington Maritime Radio, Wellington Maritime Radio* (3 times gives them time to get ready to note your call). *This is <Boat, boat, boat>* (3 times), *<call sign>, with a trip report.*

Wellington Maritime will respond with: *<Boat>, this is Wellington Maritime, please go to Channel 71* (they might ask you to use 68. They know from your call where you are and which channel to use).

Your response is: *Going Channel 71. Change to CH 71 and call: Wellington Maritime, this is <Boat>.* They will respond: *Go ahead please <Boat>.*

You then reply: *Wellington Maritime, this is <Boat> departing Wellington for Tory Channel, ETA <x> hours. We have <x> POB* (people on board).

The response from Wellington Maritime will be: *<Boat>, this is Wellington Maritime, that is all logged thank you,* or some other request.

Your reply is to confirm their response with something like: *Thank you Wellington Maritime, this is <Boat> listening 16, over.*

If you decide to stop and go fishing, or your trip is taking longer than expected, you must call on CH 16 again and update them with your new arrival time, or with your abandonment if you have turned back.

At the end of the trip the format is similar to departure and you can save some of the channel-changing if you call Wellington Maritime on CH 16 and say, very slowly and clearly: *Wellington Maritime* (3 times), *this is <Boat>* (3 times), *<call sign>, with a TR arrival at ... <destination>.*

They will normally respond with something like: *<Boat>, this is Wellington Maritime, that's all received, have a good day.*

Your response is: *Thank you for listening, this is <Boat> listening 16, over.*

Tory Channel transit

1. Tory Channel Reporting Arc, of radius 3.8NM, has been established centred on 41° 12.71' S, 174° 19.12' E.
2. Only one vessel of 350 gross tonnage or more is permitted to navigate in the Tory Channel Controlled Navigation Zone at any one time. The Tory Channel Controlled Navigation Zone is defined as a line bearing 320° from Scraggy Point Light, 41° 12.91' S., 174° 18.31' E, to Arapawa Island; and an arc of radius 0.6NM, centred on 41° 12.71' S., 174° 19.12' E.

3. *All* inward-bound vessels on arrival at the Tory Channel Reporting Arc are to transmit a message to 'All ships' on VHF CH 18 giving ETA for entering the Tory Channel Controlled Navigation Zone. Note: the broadcast made on CH 18 may also be transmitted on CH 16 and CH 63.
4. *All* outward-bound vessels when passing a line projected between Motukina Point Light and Te Uira Karapa East Point Light are to transmit a message to 'All ships' on VHF CH 18 giving ETA for entering the Tory Channel Controlled Navigation Zone. Note: the broadcast made on CH 18 may also be transmitted on CH 16 and CH 63.
5. For further information, refer to Marlborough District Council Bylaws.



MARINE RADIO STATIONS

Lowry Bay Sports Radio

VHF CH62

Lowry Bay Yacht Club Start Box and the clubhouse are equipped with VHF radio. The Start Box is usually staffed during scheduled club events for ship-to-shore communications. CH 62 is generally monitored during harbour events, offshore, and out-of-harbour events. For some events CH 77 may be used.

Port Nicholson Sports Radio

VHF CH 62, 74

The RPNYC is equipped with VHF and MF SSB radios. The club's radio station (VHF CH 62) is manned during programmed races for ship-to-shore communication. Other channels will be monitored as specified by the Sailing Instructions. The VHF is normally switched on to CH 62 during office hours.

Port Nicholson Association Radio

VHF CH 62

PNAR is a company formed by three yacht clubs in Wellington (RPNYC, LBYC, EBYMBC) and operates a maritime VHF radio repeater from Mt Kaukau, Wellington. Extensive VHF communications are provided for recreational and commercial marine operators within the Wellington, Palliser, Marlborough, Cook, D'urville and Kapiti areas. Wellington Harbour Radio maintains a 24-hour listening watch on this channel.

Wellington Harbour Radio (Beacon Hill station)

VHF CH 04, 14, 16, 62

Located on Beacon Hill overlooking the entrance to Wellington Harbour, Beacon Hill Radio is operated by the Wellington Regional Council, Harbours Department. The station operates 24 hours a day. The CH 04 repeater is sited above Cape Palliser and gives excellent VHF coverage up the East Coast to about Castlepoint and back into Wellington Harbour. Ph: 04 388 7795.

Wellington Coastguard Radio

ZMH 84

VHF working channels 16 and 62 on dual watch, and monitors VHF CH 14; SSB working channel 2182.

Coastguard vessels:

Wellington Coastguard vessels on patrol monitor VHF CH 16 and 62 on dual watch.

Saturday and Sunday only, and public holidays:

0900 to 1800 hrs NZST (1900 hrs NZDT)

Urgent inward calls: 04 386 3531 *Non-urgent calls:* 04 386 3530

Note: After-hours Wellington Volunteer Coastguard responds to Police call-outs by pager as required. The pagers can be activated by contacting Police Control.

Weather and navigation warnings

Wellington Coastguard Radio holds current weather forecasts and navigation warnings for the Cook Strait and D'urville areas and will pass these on.

Marlborough Nelson Marine Radio Association

VHF CH 01, 04, 63, 65, 04, 60

- 01 Most areas
- 04 Western D'urville, outer Pelorus, Tasman Bay and Golden Bay
- 63 Queen Charlotte Sound, Port Underwood, Cook Strait south to Cape Campbell, Kapiti, Mana, and also parts of Kenepuru and Pelorus Sounds
- 65 Kenepuru and Pelorus Sounds, Havelock, outer Pelorus area, D'urville, western Cook Strait, parts of Tasman Bay, Golden Bay, and large sections of Queen Charlotte Sound
- 04 Tasman Bay and western Marlborough Sounds
- 60 Golden Bay, around west coast and up to Taranaki coast

Any person wishing to use the above channels is required to be a member of the Association and pay a yearly fee. Further information can be obtained from the web-site www.mmr.org.nz.

Maritime Radio

VHF CH 16, 67, 68, 69, 71

Maritime Radio monitors 16, 67, 68, 69, and 71 on continuous watch 24 hours, 7 days a week.

Weather broadcast times: 0533, 0733, 1033, 1333, 1733, 2133.

For SSB service: watch as listed in Small Ships Radio Telephone Service Booklet PIB 7.9.

Wellington Regional Council

VHF CH 20

The channel transmits latest marine weather forecast, weather events, as well as wind speeds and direction from several points in Cook Strait.

Ship-to-ship channels 6 and 8

Recreational vessels should use VHF channels 6 or 8 when in sight of each other.



Masterpiece

COOK STRAIT INFORMATION

Cook Strait is a natural wind funnel bordered by high geographic features on the North and South Islands, and at times creates a formidable gauntlet for boats sailing to and from the South Island. The following information is provided to help you cross the Strait safely.

Wind

Wind direction in Cook Strait is normally NW or S to SE. Storm force winds occur on average about 25 times a year. Gale force NW winds are usually very localised, but S gales affect the whole Strait. SE gales are more pronounced on the western side of the Strait.

Tidal streams

Tidal streams in Cook Strait along the south coast of the North Island generally flow towards the NW for 5 hours and SE for 7 hours. However, they are unreliable and the surface currents are affected by prolonged periods of strong winds, and the shoreline configuration can cause counter currents if close inshore.

High water occurs at Tory Channel about 4 hours later than Wellington at spring tides and slightly less at neap tides. This difference causes the strong streams. The streams are stronger during spring tides, which occur at two-weekly intervals, when high water Wellington is about 0600 and 1800.

Tidal stream predictions for Tory Channel have generally been found to be very accurate.

Sea

Broken water is experienced in different parts of the Strait. This is caused by the cold north-setting bottom current being forced to the surface on meeting the steep slopes of submarine canyons, which will also cause modification of the tidal stream. Broken water is also caused when the wind flow is against the tidal stream, especially between Sinclair Head and Cape Terawhiti, off the eastern entrance of Tory Channel, and in the vicinity of the Brothers Islands.

Fog

Fog is rarely found in the Cook Strait area as the wind funnel effect sweeps it away. Late summer is usually the only time of year fog is experienced. Low cloud and rain, though, can severely restrict visibility.

Hazards

Karori Rock stands in the centre of a considerable area of underwater hazards. The rock is approximately half a mile offshore and surmounted by a lighthouse. A sector light is on the southern end of Tongue Point and shows red to the southeast, covering various hazards including Thoms Rock, approximately 1 mile offshore and 1 mile southeast of Karori Rock. Thoms Rock has about 1.5 metres of water over it. About 1 mile northwest of Karori Rock is Luna Rock which has 1.8 metres of water over it. Luna Rock is close to the shore and not covered by the red sector of Karori Light.

The only offshore hazard in the middle of Cook Strait is Fisherman's Rock. Lying almost midway between Cape Koamaru and Mana Island, it has a clearance of 10 metres. However, the area surrounding the rock can be hazardous in strong tide or wind conditions. Large overfalls and seas can develop in these conditions.

Sailing instructions

The combination of broken water and strong wind gusts between Sinclair Head and Cape Terawhiti makes it advisable to transit this section of the passage (commonly known as the Karori Rip) at slack water. This section of your voyage is generally the most uncomfortable and should not be attempted by small craft or the inexperienced except in favourable conditions. Strong southerly winds with a SE setting tidal stream can make this area a real horror show, and in the interests of safe boating and harmonious crew relations, should be avoided.

Travelling westbound

Leave Wellington to arrive at Sinclair Head one hour before high water Wellington. You will then have slack water at the rip and a favourable tidal stream across Cook Strait.

Alternatively, leave Wellington to arrive at Sinclair Head one hour before low water Wellington. You will have slack water at the rip but have an adverse tidal stream across Cook Strait which may be preferable in northerly winds. Tory Channel will be reached at slack water.

Travelling eastbound

Leave Tory Channel two hours after the tidal stream commences setting east. You will have a favourable tidal stream across the Cook Strait – Cape Terawhiti – Sinclair Head area.

Alternatively, in southerly winds leave Tory Channel as the tidal stream starts setting west. You will have an adverse tidal stream across Cook Strait which may be preferable in southerly winds. The Cape Terawhiti – Sinclair Head area will be reached at slack water.

Tory Channel eastern entrance

Ships make frequent use of Tory Channel and you must keep clear of the mid-channel at the eastern entrance when large ships are present. All vessels transiting the entrance are required to give a warning of this on VHF CH 18 (Port Operations channel). The Marlborough District Navigation Bylaws outline the reporting procedure that should be followed.

Whether a warning is heard or not, the entrance should be navigated with caution. Ferry and shipping timetables are subject to seasonal changes, and skippers are reminded that they must keep clear of all shipping lanes at all times.

Radio

Ships maintain a listening watch on the following frequencies:

Within Wellington Harbour limits:	VHF CH 14
Within Marlborough Harbour limits:	VHF CH 18
Cook Strait:	VHF CH 16

Clearing marks

Thoms Rock

This is situated between Karori Rock and Sinclair Head and lies 0.35 miles (650 metres) outside a line joining these points. Rock-hopping in this area is not advisable.

Day: Keep Pencarrow Lighthouse visible clear of Sinclair Head until Koamaru can be seen clear of the west side of Karori Rock.

Night: Keep Pencarrow Light visible (red or white) until Tongue Point Light changes from red to white.

Sinclair Head

Day: To pass about 1 mile off Sinclair Head, keep Pencarrow Lighthouse (lower) and Old Lighthouse (upper) in line.

Night: Keep in the white sector of Pencarrow Light to pass 0.7 miles off Sinclair Head.

Checking on tidal set

Day: Observe Karori Rock relative to Sinclair Head or Turakirae Head. Observe Tory Channel entrance relative to Mount Stokes.

Night: Observe Tory Channel entrance leading lights.



Impulsive

BOAT REGISTER

Keelers

2 Low 4 Zero	Paul Clarke and Debbie Snelson	Farr 9.2	5536
Alishan	Tony Braddock	Lotus 12.80	
Alize	Patrick King and Guenter Wabnitz	Lotus 9.2	6704
Am Meer	Geoff Thorn and Katie Mathison	Bavaria 38	8843
Amnesty	Ingrid Harder	Farr 38	
April Sun	David Muir	Whiting	
August Sun	Martin Payne	Jeaneau 40	
Bianco	Brian Sutcliffe	Raven 26	2012
Bluebell II	Daniel Benton	Reactor 25	2336
Bullfinch	Megan Adamson	Cavalier36	2895
Cabaret	Jarred Gustafson	Chico 40	5335
Capella	Michael Wright		
Celebrity	Dave Campbell and Sally Betts	Farr 38	4649
Chickadee	Molly Melhuish	Chico 30	3810
Clarebuoyant	Graeme Mitchell	Birdsall Gulf 30	3917
Clear Vision	Josh Hayter	Young 11	6252
Codebreaker	Gary Craig	Thompson	9565
Concept	John Ross	Robertson	4414
Crewcut	John Lloyd and Barba- ra Mavor	Beale 9.5	6591
Ex Tension	Mark and Jacqui Wat- son	Davidson 36	14214
Fantasia	Kim Zwiers	Farr 1020	6251
Fellow Sea	Geoff and Jo Fellows	Eagle 365 11m	9026
Fidelio	Rudiger Schwieger	Lotus 9.2	5110
Footprints	Grant McNamara	Raven 26	3348
Freedom	Theo and Oliver Muller	Haag 40	9257
Impulse	Paul Rickard	Benetau	6315
Impulsive	Bob and Sue Rowell	Lotus 9.2	5819
Jayhawk	Philip Robins		
Kaea	Lawrie Stewart	Neeley 7.9	8289
Kama II	Gareth Edwards	Carter Passage 33	9425

Kiwi Dream	Chris Hall	Pelorus 26	6506
Lamour	Guenter Wabnitz and Patrick King	Bostrum 37	
Lebowski	Mike Bullock	Jeanneau DS43	
Leoa	Max Cooper	S&S	8546
Mana	James Matthews		
Masterpiece	Steve Gaskin	Beale 45	8090
Megastar	Mark Greig	A Wright 12m	
Minika	Ian White	Marauder 8.4	5587
Mint Condition	Gillian Alderwick	Lotus 9.2	4319
Misty Clipper	Paul Dupree	Mercedes Clipper	4320
Moonshadow 50	Kent Borjesson	FD 12	940
Muritai	Sharon Swain	Keeler	
Obsession	John Hermans	Whiting 40	9368
Only Blue	John Mills	Beneteau 44	
Out to Lunch	Jennie Darby	Davidson 28	5468
Owhiro Lady	Ian Reid	Ganley Shadow	8241
Phoenix	Jacob Halliburton	Allan Wright 36	
Pocket Rocket	David Warren	Wright 6.5	9336
Quetzalli	Max & Mary Meyers	Raven 31	5975
Rasalas	Godfrey Walker	Lotus 9.2	6369
Rose	Keith Murray	Raven 31	6043
Roxana IV	Peter Scott	Townson 8.76	6217
Running Free	Jerry Hewitt	Colin Childs	5649
Sail La Vie	Mathew Nolan	Raven 31	6353
Sea Breeze	John Angelica		
Shardik	Simon Miller	Lotus 9.2	3408
Sika	Michael Lange	Sika 2226	H28
Sika II	Gordon McIntosh	Farr 9.2	3305
Smile	David Reece	Nova 28	3254
Solace	Evan Still	Hylas 44CC	
Squid Vicious	Murray Craig	Ross 930	5974
Step Ahead	Russell Finlay	Raven 31	5662
Stolen	Dan Edhouse	Farr 1020	5787
String Theory	Phil Weeks	Open 8.5	7655
Stunned Mullet	Warren & Paul Snowden	Ross 930	380
Summer Lightning	Martin Scott	Beale 33	6613
Talaria	Anton van Opdorp	Hartley 12m	6416
Testarossa	Grant Reid	Ross 930	6350

Time Out	John Lord	Jeanneau 45	
Total Eclipse	Scott Barker	Elliot 10	8099
True Blue	Ian Blair	Farr 9.2	6055
True Colours	Michael Pynenburg	Roberts 25	4544
Unity	Andrew Saunderson	Farr 1020	5574
Vanilla Ice	Rhys Moulton	Warwick 44	8152
Verdict	Grahame Eathorne	Mull 9.5	5186
Vortex	George Geris	Lotus 9.2	3802
Wild Goose	Debbie May		

Trailer yachts

Amorat	Shaun Pirimona	Bonitl Aquarius	
Dawn Treader	Andy Nathanson & Mandy Britnell	Alan Wright	
Dawna	Fraser Hoyland	Pelin	
Gizmo	Steve Taylor		113
Kotuku	Phil Dashfield	Alan Wright	T646
		Catalina	
Lady Stardust	William & Daphne Dashfield	Farr 6000 T/Sailer	
Madness	Matthew Harward	Ross 780	T3380
Muffin	Wayne McEwen	Trojan	
Pulse	Edward Cox	Nolex 25	T3765
Quest	Ralph McCorkindale	Nolex 25	T800
Rhondamine	Jeremy Goodson	Laser	
Roxette	Ben White	Noelex 22	T501
Synfinity	Andrew Nixon	Far East 26	11811
The Magician	Peter Montgomery	Midnight 21	
White Heat	Mark Stanton	Elliott 7	T4065

Launches and power boats

Anvil	Margie Petherick	Australian Tuna
Australis	Alan Burdan	McGready 45
Blue Water	Graham McMillan	Stark Brothers 14
Decisive	Graeme Burgess	Bayliner
Donna Maree	Les Prescott	Hartley
Dreamliner	David Melhuish	
Kori	Craig Kenny	Nissan
Lady Pander	Brian Hughes	Salthouse
Lechyd-da	Suzi Grice	
Liquid Indulgence	Andrew Boswell	Riviera 43
Manunui	Merelle Harvey	
Pipinui	Murray & Elaine Campbell	Campbell Craft
Seaquill	Hayden Braddock	Markline 1300
Shariba	Kim & Julie Naylor	Salthouse Corsair 36
Venator	Ross Williams	Markline 1000
Wavelength	Peter Jackson	Genesis 3100
Y-NOT	Anthony Lucie-Smith	Bayliner Ciera 2556
Tui	Martin Simpson	
Coco	Steve Waring	Sorrento
Mac Attack	Clive Bayliss	Sea Nymph Regal 506
Petite Cheri	Kevin Thomson	Searay Sundancer 230
Romeo	Rex Brooke-Taylor	Bill Upfold Elite 15
Seamist	Geoff Infield	

If your boat details are incorrect or not here (and you are a member), please send your updated details to info@lbyc.org.nz or fill in the form on the Boat Register on the LBYC website.

MEMBER LIST Error! Reference source not found.

Life members

Leo Austin
Rex Brooke-Taylor
Romain Busby
Enid Craig
Ian Craig
Grahame Eathorne
Sue Eathorne
Cathy Kent
Bob Rowell
Sue Rowell
Steve Taylor

Senior members

Megan Adamson
Gillian Alderwick
Jane Anderson
Michael Andre
John Angelica
Dean Apps
Gordon Attwood
Robert Baldock
Scott Barker
Steve Barnsley
Helen Bartholomew
Clive Bayliss
Mike Beck
Daniel Benton
Ian Blair
Roger Bolam
Andrew Boswell
Anthony Bracefield
Hayden Braddock
Tony Braddock
Alex Bridger
Carlene Brown
Mike Bullock
Alan Burdan

Graeme Burgess
Dave Campbell
Elaine Campbell
Murray Campbell
Jennifer Chin
Colleen Christison
Frank Clark
Paul Clarke
Eddie Condra
Nigel Connell
Max Cooper
Linda Cory
Edward Cox
Murray Craig
Gary Craig
Jennie Darby
William Dashfield
Phil Dashfield
Richard Davis
Catherine Dawson
Peter Deefholts
Rex Delany
Ann Dormer
Stephen Dr Jay
Dan Edhouse
Gareth Edwards
Wendy Edwards
Ray Flaws
Paul Fugle
Steve Gaskin
George Geris
Peter Gilbert
Sarah Gilbert
Jeremy Goodson
Mark Greig
Suzi Grice
Mark Guiney
Jarred Gustafson
Chris Hall

Jacob Haliburton
Ingrid Harder
Laurie Hargeave
Merelle Harvey
Matthew Harward
Philip Harward
Janet Hay
Josh Hayter
John Hermans
Jerry Hewitt
Fraser Hoyland
Brian Hughes
Geoff Infield
Peter Jackson
Ross Jamieson
Craig Kenny
Patrick King
Karsten Kroeger
Michael Lange
John A Lloyd
John Lord
Anthony Lucie-Smith
Mark Luiten
Don Manning
Ray Manning
Greg Marsden
Katie Mathison
James Matthews
Barbara Mavor
Neil McDonald
Fran MacDonald
Wayne McEwen
Murray McGregor
Gordon McIntosh
Grant McNamara
Molly Melhuish
David Melhuish
Piroska Meszoly
Jamie Meyer

Max Meyers
Mary Meyers
Simon Miller
John Mills
Gavin Mitchell
Graeme Mitchell
Alex Mitchell-Baker
Peter Montgomery
Rhys Moulton
David Muir
Oliver Muller
Theo Muller
Trish Murphy
George Murray
Keith Murray
Adam Nathanson
Kim Naylor
Andrew Nixon
Carl Nixon
Matthew Nolan
Christopher Northmore
Philip Orchard
Tony Patterson
Martin Payne
Max Pierce
Clive Pigott
Shauna Pirimona
Brent Porter
Cole Porter

Lynn Porter
Les Prescott
Michael Pynenburg
John Rainey-Smith
Wayne Rauhihi
Anthony Ray
David Reece
Grant Reid
Ian Reid
Jamie Reid
Beverley Richards
Paul Rickard
Howard Rivett
Boydie Robinson
Wendy Rozenberg
John Rushton
Malcolm Sanderson
Andrew Sanderson
Rebecca Schasching
Ingo Schleuss
Rudiger Schwieger
Martin Scott
Peter Scott
Tony Seabrook
Martin Simpson
Greg Skelton
Peter Smeaton
Marcus Smith
Laura Smits

Paul Snowden
Warren Snowden
Andrew Stanton
Mark Stanton
Lawrie Stewart
Brian Stewart
Evan Still
Brian Sutcliffe
Sharon Swain
Andrew Swan
Kevin Thomson
Geoff Thorn
Tom Trapp
Anton van Opdorp
David Vaughan
Guenter Wabnitz
Rapaera Waitai
Godfrey Walker
Kathy Walls
Steve Waring
David Warren
Mark Watson
Tom Weber
Phil Weeks
Ben White
Ian White
Ross Williams
Michael Wright
Geoff Wylde

Family Members

Julie Adams
Margareth Attwood
Sally Betts
Pam Blair
Mandy Britnell
Anne Callaghan
Daphne Dashfield
Liz Davis
Paul Dupree
Jennnifer Free
Anna Joyford
Christine Luiten
Michael Mador
Debbie May
Margaret McKenzie
Wietske Muller
Julie Naylor
Margie Petherick
Helen Rushton
Debbie Snelson
Jacqui Watson
Maria Williams

Affiliate Member

Sailability Wellington

Country Members

Kent Borjesson
Geoffrey Fellows
Russell Finlay
Ralph McCorkindale
Graham McMillan
John Ross
Stephan Schulz
Gary Streater
Sue Thomson
Kim Zwiers

THANKS TO OUR SPONSORS

We gratefully acknowledge the support of the following companies and boats that sponsored the 2020/21 racing programme and supported the club.

Burnsco Leisure and Marine

Fujitsu

Sailability

Seaview Marina

Pelorus Trust

Pub Charity

Heineken

City Sea Canvas

Snowden Bricks & Blocks

MG Composites

Marsden Marine

Rolrich Panel & Spray

Bocardia Print

MM Research

Infometrics

CPS Design

Four Winds Foundation

Apparel Master

Strait Marine

Gibson Sheat Lawyers

Italian Ceramics

Metal art

Whittakers

East by West

Whiting Financial Services



Testarossa

VHF MARINE CHANNELS



TIDES 2020 / 2021



Sourced from <http://www.linz.govt.nz/>
E-mail address customersupport@linz.govt.nz

NEW ZEALAND HYDROGRAPHIC AUTHORITY TIDE PREDICTIONS

WELLINGTON

Lat. 41° 17' S Long. 174° 47' E

SEPTEMBER 2020

N.Z. LOCAL TIMES AND HEIGHTS OF HIGH AND LOW WATERS

Time	m	Time	m	Time	m	Time	m
1	0349 1.6	9	0400 0.7	17	0356 1.7	25	0516 0.5
Tu	0957 0.6	We	1001 1.6	Th	1007 0.5	Fr	1132 1.8
	1614 1.7		1621 0.7		1623 1.8		1755 0.5
	2234 0.7		2226 1.5		2238 0.6		2357 1.7
2	0439 1.6	10	0439 0.7	18	0454 1.7	26	0609 0.5
We	1047 0.7	Th	1043 1.6	Fr	1106 0.5	Sa	1227 1.8
	1702 1.7		1703 0.7		1721 1.8		1847 0.5
	2324 0.7		2307 1.5		2338 0.5		
3	0528 1.6	11	0518 0.7	19	0551 1.8	27	0050 1.7
Th	1136 0.7	Fr	1126 1.6	Sa	1206 0.5	Su	0801 0.6
	1750 1.6		1744 0.7		1819 1.8		1420 1.8
			2348 1.5				2037 0.6
4	0014 0.7	12	0558 0.7	20	0038 0.5	28	0242 1.6
Fr	0616 1.6	Sa	1210 1.6	Su	0648 1.8	Mo	0853 0.6
	1225 0.7		1825 0.7		1307 0.5		1511 1.7
	1838 1.6				1917 1.8		2126 0.6
5	0103 0.7	13	0031 1.5	21	0137 0.5	29	0333 1.6
Sa	0703 1.6	Su	0640 0.7	Mo	0745 1.8	Tu	0943 0.7
	1314 0.7		1256 1.7		1407 0.4		1601 1.7
	1926 1.6		1908 0.6		2016 1.8		2215 0.7
6	0150 0.7	14	0116 1.6	22	0233 0.5	30	0423 1.6
Su	0748 1.6	Mo	0726 0.7	Tu	0842 1.8	We	1033 0.7
	1403 0.7		1343 1.7		1507 0.4		1648 1.6
	2014 1.5		1954 0.6		2113 1.8		2303 0.7
7	0236 0.7	15	0206 1.6	23	0329 0.5		
Mo	0833 1.6	Tu	0816 0.6	We	0939 1.9		
	1450 0.7		1434 1.7		1605 0.4		
	2100 1.5		2044 0.6		2209 1.8		
8	0319 0.7	16	0300 1.6	24	0423 0.5		
Tu	0917 1.6	We	0909 0.6	Th	1036 1.8		
	1536 0.7		1527 1.8		1701 0.4		
	2144 1.5		2139 0.6		2303 1.8		

TIMES SHOWN IN BOLD HAVE BEEN ADJUSTED FOR N.Z DAYLIGHT TIME

CROWN COPYRIGHT RESERVED

NEW ZEALAND HYDROGRAPHIC AUTHORITY TIDE PREDICTIONS

WELLINGTON

Lat. 41° 17' S Long. 174° 47' E

OCTOBER 2020

N.Z. LOCAL TIMES AND HEIGHTS OF HIGH AND LOW WATERS

Time	m	Time	m	Time	m	Time	m
1	0512 1.6	9	0504 0.7	17	0529 1.8	25	0033 1.7
Th	1122 0.7		1110 1.6		1146 0.5		0645 0.6
	1736 1.6	Fr	1733 0.7	Sa	1759 1.8	Su	1303 1.8
	2353 0.7		2334 1.5				1922 0.5
2	0600 1.5	10	0543 0.7	18	0012 0.5	26	0124 1.7
Fr	1211 0.7		1152 1.6		0629 1.8		0736 0.6
	1823 1.6	Sa	1813 0.7	Su	1248 0.5	Mo	1355 1.7
					1859 1.8		2009 0.6
3	0042 0.8	11	0015 1.5	19	0114 0.5	27	0214 1.6
	0647 1.5		0624 0.7		0727 1.8		0827 0.6
Sa	1300 0.7	Su	1237 1.7	Mo	1350 0.4	Tu	1444 1.7
	1911 1.5		1854 0.6		1958 1.8		2056 0.6
4	0131 0.8	12	0058 1.6	20	0213 0.5	28	0304 1.6
	0733 1.5		0707 0.7		0825 1.9		0916 0.7
Su	1349 0.7	Mo	1323 1.7	Tu	1451 0.4	We	1532 1.6
	1959 1.5		1937 0.6		2056 1.8		2142 0.7
5	0218 0.8	13	0144 1.6	21	0311 0.5	29	0354 1.6
	0818 1.5		0755 0.6		0922 1.9		1005 0.7
Mo	1438 0.7	Tu	1413 1.7	We	1550 0.4	Th	1619 1.6
	2045 1.5		2023 0.6		2153 1.8		2229 0.7
6	0302 0.8	14	0235 1.6	22	0406 0.5	30	0442 1.5
	0902 1.6		0847 0.6		1019 1.9		1054 0.7
Tu	1525 0.7	We	1505 1.8	Th	1646 0.4	Fr	1706 1.5
	2130 1.5		2114 0.6		2248 1.8		2317 0.8
7	0345 0.8	15	0331 1.7	23	0500 0.5	31	0530 1.5
	0945 1.6		0943 0.5		1115 1.9		1143 0.8
We	1609 0.7	Th	1601 1.8	Fr	1741 0.4	Sa	1754 1.5
	2213 1.5		2210 0.6		2341 1.7		
8	0425 0.7	16	0430 1.7	24	0553 0.5		
	1027 1.6		1043 0.5		1210 1.8		
Th	1652 0.7	Fr	1659 1.8	Sa	1832 0.5		
	2254 1.5		2310 0.5				

TIMES LISTED ARE N.Z. DAYLIGHT TIME

CROWN COPYRIGHT RESERVED

NEW ZEALAND HYDROGRAPHIC AUTHORITY TIDE PREDICTIONS

WELLINGTON

Lat. 41° 17' S Long. 174° 47' E

NOVEMBER 2020

N.Z. LOCAL TIMES AND HEIGHTS OF HIGH AND LOW WATERS

	Time	m		Time	m		Time	m		Time	m
1	0007	0.8	9	0555	0.7	17	0050	0.5	25	0144	1.6
Su	0616	1.5	Mo	1208	1.7	Tu	0706	1.9	We	0757	0.7
	1232	0.8		1827	0.6		1332	0.5		1413	1.6
	1842	1.5					1938	1.8		2022	0.7
2	0056	0.8	10	0030	1.6	18	0150	0.5	26	0232	1.6
Mo	0702	1.5	Tu	0641	0.6	We	0804	1.9	Th	0845	0.7
	1322	0.8		1257	1.7		1432	0.4		1459	1.6
	1930	1.5		1911	0.6		2035	1.8		2106	0.7
3	0143	0.8	11	0118	1.6	19	0247	0.5	27	0321	1.6
Tu	0746	1.6	We	0731	0.6	Th	0900	1.9	Fr	0932	0.7
	1410	0.7		1348	1.8		1530	0.4		1545	1.5
	2016	1.5		1958	0.6		2130	1.8		2152	0.7
4	0227	0.8	12	0210	1.7	20	0342	0.5	28	0408	1.5
We	0830	1.6	Th	0825	0.6	Fr	0956	1.9	Sa	1020	0.8
	1457	0.7		1442	1.8		1625	0.5		1632	1.5
	2100	1.5		2049	0.6		2224	1.7		2239	0.8
5	0310	0.8	13	0307	1.7	21	0435	0.5	29	0455	1.5
Th	0913	1.6	Fr	0923	0.5	Sa	1051	1.8	Su	1109	0.8
	1542	0.7		1539	1.8		1717	0.5		1720	1.5
	2143	1.5		2145	0.5		2315	1.7		2328	0.8
6	0351	0.7	14	0407	1.8	22	0527	0.6	30	0541	1.6
Fr	0955	1.6	Sa	1024	0.5	Su	1144	1.8	Mo	1159	0.8
	1624	0.7		1638	1.8		1806	0.5		1809	1.5
	2224	1.5		2246	0.5						
7	0431	0.7	15	0508	1.8	23	0006	1.7			
Sa	1038	1.6	Su	1127	0.5	Mo	0618	0.6			
	1705	0.7		1739	1.8		1236	1.7			
	2304	1.5		2348	0.5		1853	0.6			
8	0512	0.7	16	0608	1.8	24	0055	1.6			
Su	1123	1.7	Mo	1230	0.5	Tu	0708	0.6			
	1746	0.6		1839	1.8		1325	1.7			
	2346	1.6					1938	0.6			

TIMES LISTED ARE N.Z. DAYLIGHT TIME

CROWN COPYRIGHT RESERVED

NEW ZEALAND HYDROGRAPHIC AUTHORITY TIDE PREDICTIONS

WELLINGTON

Lat. 41° 17' S Long. 174° 47' E

DECEMBER 2020

N.Z. LOCAL TIMES AND HEIGHTS OF HIGH AND LOW WATERS

Time	m	Time	m	Time	m	Time	m
1	0016 0.8	9	0008 1.6	17	0125 0.5	25	0158 1.6
	0626 1.6		0621 0.6		0741 1.8		0811 0.7
Tu	1249 0.8	We	1236 1.7	Th	1411 0.5	Fr	1424 1.5
	1857 1.5		1850 0.6		2012 1.7		2030 0.7
2	0104 0.8	10	0058 1.7	18	0221 0.5	26	0245 1.6
	0711 1.6		0713 0.6		0836 1.8		0856 0.8
We	1338 0.7	Th	1328 1.8	Fr	1507 0.5	Sa	1508 1.5
	1943 1.5		1938 0.6		2105 1.7		2113 0.7
3	0149 0.8	11	0152 1.7	19	0315 0.5	27	0330 1.6
	0755 1.6		0809 0.5		0931 1.8		0941 0.8
Th	1426 0.7	Fr	1422 1.7	Sa	1600 0.5	Su	1554 1.5
	2028 1.5		2030 0.5		2157 1.7		2158 0.8
4	0234 0.7	12	0249 1.7	20	0408 0.6	28	0416 1.6
	0840 1.6		0907 0.5		1024 1.8		1028 0.8
Fr	1512 0.7	Sa	1520 1.7	Su	1651 0.5	Mo	1641 1.5
	2112 1.5		2126 0.5		2247 1.7		2245 0.8
5	0317 0.7	13	0349 1.8	21	0459 0.6	29	0501 1.6
	0925 1.7		1008 0.5		1116 1.7		1117 0.8
Sa	1556 0.7	Su	1619 1.7	Mo	1738 0.6	Tu	1730 1.5
	2154 1.5		2225 0.5		2336 1.6		2334 0.8
6	0401 0.7	14	0448 1.8	22	0549 0.6	30	0547 1.6
	1010 1.7		1109 0.5		1206 1.7		1208 0.7
Su	1638 0.6	Mo	1719 1.7	Tu	1823 0.6	We	1819 1.5
	2237 1.6		2326 0.5				
7	0445 0.7	15	0547 1.8	23	0025 1.6	31	0022 0.7
	1057 1.7		1211 0.5		0638 0.7		0633 1.6
Mo	1721 0.6	Tu	1818 1.7	We	1253 1.6	Th	1259 0.7
	2322 1.6				1906 0.6		1907 1.5
8	0532 0.6	16	0026 0.5	24	0112 1.6		
	1146 1.7		0645 1.9		0725 0.7		
Tu	1805 0.6	We	1312 0.5	Th	1339 1.6		
			1916 1.7		1948 0.7		

TIMES LISTED ARE N.Z. DAYLIGHT TIME

CROWN COPYRIGHT RESERVED

NEW ZEALAND HYDROGRAPHIC AUTHORITY TIDE PREDICTIONS

WELLINGTON

Lat. 41° 17' S Long. 174° 47' E

JANUARY 2021

N.Z. LOCAL TIMES AND HEIGHTS OF HIGH AND LOW WATERS

Time	m	Time	m	Time	m	Time	m
1	0110 0.7	9	0138 1.8	17	0248 0.6	25	0251 1.6
Fr	0720 1.6		0757 0.5		0904 1.7		0901 0.7
	1350 0.7	Sa	1407 1.7	Su	1533 0.6	Mo	1512 1.5
	1954 1.5		2015 0.5		2129 1.6		2118 0.7
2	0158 0.7	10	0235 1.8	18	0340 0.6	26	0335 1.6
Sa	0808 1.7		0854 0.5		0956 1.7		0945 0.7
	1439 0.7	Su	1503 1.7	Mo	1622 0.6	Tu	1558 1.5
	2040 1.5		2109 0.5		2218 1.6		2203 0.7
3	0246 0.7	11	0333 1.8	19	0431 0.7	27	0420 1.6
Su	0856 1.7		0952 0.5		1046 1.6		1033 0.7
	1527 0.6	Mo	1600 1.7	Tu	1708 0.6	We	1647 1.5
	2126 1.6		2206 0.6		2306 1.6		2250 0.7
4	0334 0.6	12	0430 1.8	20	0520 0.7	28	0507 1.6
Mo	0946 1.7		1051 0.5		1134 1.6		1123 0.7
	1613 0.6	Tu	1658 1.7	We	1752 0.7	Th	1737 1.5
	2213 1.6		2305 0.6		2353 1.6		2340 0.7
5	0424 0.6	13	0527 1.8	21	0608 0.7	29	0555 1.7
Tu	1036 1.7		1150 0.5		1220 1.6		1216 0.7
	1659 0.6	We	1756 1.7	Th	1834 0.7	Fr	1828 1.5
	2301 1.7						
6	0515 0.6	14	0603 0.6	22	0639 1.6	30	0632 0.7
We	1127 1.7		0622 1.8		0653 0.7		0645 1.7
	1746 0.6	Th	1249 0.6	Fr	1304 1.5	Sa	1311 0.7
	2351 1.7		1852 1.7		1914 0.7		1919 1.6
7	0608 0.6	15	0659 0.6	23	0124 1.6	31	0125 0.7
Th	1219 1.7		0717 1.8		0736 0.7		0737 1.7
	1833 0.6	Fr	1346 0.6	Sa	1346 1.5	Su	1405 0.7
			1946 1.7		1954 0.7		2010 1.6
8	0644 1.7	16	0154 0.6	24	0207 1.6		
Fr	0702 0.5		0811 1.8		0818 0.7		
	1312 1.7	Sa	1441 0.6	Su	1429 1.5		
	1923 0.5		2038 1.6		2035 0.7		

TIMES LISTED ARE N.Z. DAYLIGHT TIME

CROWN COPYRIGHT RESERVED

NEW ZEALAND HYDROGRAPHIC AUTHORITY TIDE PREDICTIONS

WELLINGTON

Lat. 41° 17' S Long. 174° 47' E

FEBRUARY 2021

N.Z. LOCAL TIMES AND HEIGHTS OF HIGH AND LOW WATERS

Time	m	Time	m	Time	m	Time	m
1	0218 0.6	9	0317 1.8	17	0403 0.7	25	0341 1.7
Mo	0830 1.7		0936 0.5		1016 1.6		0951 0.7
	1458 0.6	Tu	1542 1.7	We	1636 0.7	Th	1605 1.5
	2100 1.6		2149 0.6		2235 1.6		2211 0.7
2	0312 0.6	10	0412 1.8	18	0452 0.7	26	0429 1.7
	0924 1.7		1031 0.6		1103 1.6		1041 0.7
Tu	1549 0.6	We	1637 1.6	Th	1720 0.7	Fr	1657 1.5
	2151 1.7		2244 0.6		2321 1.6		2303 0.7
3	0407 0.6	11	0505 1.8	19	0538 0.7	27	0520 1.7
	1018 1.7		1126 0.6		1147 1.5		1135 0.7
We	1639 0.6	Th	1732 1.6	Fr	1801 0.7	Sa	1751 1.6
	2244 1.7		2339 0.6				2358 0.6
4	0502 0.5	12	0558 1.7	20	0005 1.6	28	0614 1.7
	1112 1.8		1222 0.6		0622 0.7		1233 0.6
Th	1729 0.6	Fr	1826 1.6	Sa	1229 1.5	Su	1846 1.6
	2337 1.7				1840 0.7		
5	0558 0.5	13	0034 0.6	21	0048 1.6		
	1206 1.7		0651 1.7		0703 0.7		
Fr	1819 0.5	Sa	1317 0.7	Su	1309 1.5		
			1919 1.6		1919 0.7		
6	0031 1.8	14	0127 0.6	22	0130 1.6		
	0652 0.5		0743 1.7		0743 0.7		
Sa	1259 1.7	Su	1411 0.7	Mo	1350 1.5		
	1910 0.5		2010 1.6		1958 0.7		
7	0126 1.8	15	0220 0.7	23	0212 1.6		
	0747 0.5		0835 1.6		0823 0.7		
Su	1353 1.7	Mo	1502 0.7	Tu	1432 1.5		
	2002 0.5		2059 1.6		2039 0.7		
8	0222 1.8	16	0312 0.7	24	0255 1.6		
	0841 0.5		0926 1.6		0905 0.7		
Mo	1447 1.7	Tu	1551 0.7	We	1516 1.5		
	2055 0.6		2148 1.6		2123 0.7		

TIMES LISTED ARE N.Z. DAYLIGHT TIME

CROWN COPYRIGHT RESERVED

NEW ZEALAND HYDROGRAPHIC AUTHORITY TIDE PREDICTIONS

WELLINGTON

Lat. 41° 17' S Long. 174° 47' E

MARCH 2021

N.Z. LOCAL TIMES AND HEIGHTS OF HIGH AND LOW WATERS

Time	m	Time	m	Time	m	Time	m
1	0056 0.6	9	0208 1.8	17	0245 0.7	25	0220 1.7
Mo	0710 1.7		0826 0.5		0856 1.5		0830 0.6
	1332 0.6	Tu	1431 1.7	We	1517 0.7	Th	1439 1.6
	1941 1.7		2040 0.6		2116 1.6		2048 0.7
2	0154 0.6	10	0301 1.8	18	0336 0.7	26	0307 1.7
	0807 1.7		0918 0.6		0945 1.5		0915 0.6
Tu	1429 0.6	We	1523 1.6	Th	1603 0.7	Fr	1529 1.6
	2036 1.7		2132 0.6		2203 1.6		2138 0.6
3	0253 0.5	11	0353 1.8	19	0424 0.7	27	0357 1.7
	0904 1.8		1009 0.6		1031 1.5		1005 0.6
We	1525 0.6	Th	1616 1.6	Fr	1645 0.7	Sa	1623 1.6
	2131 1.7		2224 0.6		2247 1.6		2232 0.6
4	0352 0.5	12	0444 1.7	20	0509 0.7	28	0450 1.7
	1001 1.8		1101 0.6		1114 1.5		1100 0.6
Th	1619 0.6	Fr	1708 1.6	Sa	1726 0.7	Su	1719 1.6
	2226 1.8		2317 0.6		2330 1.6		2331 0.6
5	0450 0.5	13	0534 1.7	21	0551 0.7	29	0547 1.7
	1056 1.8		1153 0.7		1154 1.5		1200 0.6
Fr	1712 0.5	Sa	1800 1.6	Su	1804 0.7	Mo	1817 1.7
	2322 1.8						
6	0546 0.5	14	0009 0.7	22	0012 1.6	30	0032 0.5
	1151 1.8		0625 1.6		0630 0.7		0646 1.8
Sa	1804 0.5	Su	1246 0.7	Mo	1233 1.5	Tu	1302 0.6
			1851 1.6		1843 0.7		1915 1.7
7	0018 1.8	15	0101 0.7	23	0053 1.6	31	0134 0.5
	0641 0.5		0715 1.6		0709 0.7		0745 1.8
Su	1245 1.7	Mo	1339 0.7	Tu	1313 1.5	We	1402 0.6
	1856 0.5		1940 1.6		1922 0.7		2013 1.8
8	0113 1.8	16	0154 0.7	24	0136 1.6		
	0734 0.5		0806 1.6		0748 0.7		
Mo	1338 1.7	Tu	1429 0.7	We	1354 1.5		
	1948 0.5		2029 1.6		2003 0.7		

TIMES LISTED ARE N.Z. DAYLIGHT TIME

CROWN COPYRIGHT RESERVED

NEW ZEALAND HYDROGRAPHIC AUTHORITY TIDE PREDICTIONS

WELLINGTON

Lat. 41° 17' S Long. 174° 47' E

APRIL 2021

N.Z. LOCAL TIMES AND HEIGHTS OF HIGH AND LOW WATERS

	Time	m		Time	m		Time	m		Time	m
1	0236	0.5	9	0232	1.7	17	0255	0.7	25	0230	1.7
	0844	1.8		0845	0.6		0858	1.5		0836	0.6
Th	1501	0.5	Fr	1454	1.6	Sa	1509	0.8	Su	1455	1.7
	2111	1.8		2104	0.7		2112	1.6		2109	0.6
2	0336	0.5	10	0321	1.6	18	0339	0.7	26	0326	1.8
	0942	1.8		0934	0.7		0940	1.5		0932	0.6
Fr	1557	0.5	Sa	1544	1.6	Su	1549	0.8	Mo	1554	1.7
	2208	1.8		2155	0.7		2155	1.6		2209	0.5
3	0435	0.5	11	0410	1.6	19	0420	0.7	27	0424	1.8
	1039	1.8		1023	0.7		1020	1.5		1033	0.6
Sa	1652	0.5	Su	1634	1.6	Mo	1628	0.7	Tu	1653	1.8
	2305	1.8		2245	0.7		2237	1.6		2312	0.5
4	0432	0.5	12	0458	1.6	20	0459	0.7	28	0524	1.8
	1034	1.7		1114	0.8		1059	1.5		1135	0.6
Su	1646	0.5	Mo	1722	1.5	Tu	1707	0.7	We	1753	1.8
	2302	1.8		2336	0.7		2319	1.6			
5	0526	0.5	13	0548	1.5	21	0538	0.7	29	0015	0.5
	1127	1.7		1205	0.8		1139	1.5		0625	1.8
Mo	1739	0.5	Tu	1810	1.5	We	1748	0.7	Th	1237	0.5
	2357	1.8								1852	1.8
6	0618	0.5	14	0027	0.8	22	0003	1.7	30	0118	0.5
	1220	1.7		0637	1.5		0617	0.6		0724	1.8
Tu	1831	0.6	We	1254	0.8	Th	1222	1.6	Fr	1337	0.5
				1857	1.5		1832	0.7		1950	1.9
7	0051	1.8	15	0118	0.8	23	0049	1.7			
	0708	0.5		0726	1.5		0659	0.6			
We	1312	1.7	Th	1342	0.8	Fr	1308	1.6			
	1923	0.6		1943	1.5		1920	0.6			
8	0142	1.8	16	0208	0.8	24	0138	1.7			
	0757	0.6		0814	1.5		0745	0.6			
Th	1403	1.6	Fr	1426	0.8	Sa	1400	1.6			
	2014	0.6		2028	1.6		2012	0.6			

TIMES SHOWN IN BOLD HAVE BEEN ADJUSTED FOR N.Z DAYLIGHT TIME

CROWN COPYRIGHT RESERVED

NEW ZEALAND HYDROGRAPHIC AUTHORITY TIDE PREDICTIONS

WELLINGTON

Lat. 41° 17' S Long. 174° 47' E

MAY 2021

N.Z. LOCAL TIMES AND HEIGHTS OF HIGH AND LOW WATERS

Time	m	Time	m	Time	m	Time	m
1	0219 0.4	9	0257 1.6	17	0308 0.7	25	0305 1.7
Sa	0822 1.8		0906 0.7		0907 1.5		0910 0.6
	1434 0.5	Su	1519 1.6	Mo	1512 0.8	Tu	1534 1.8
	2048 1.9		2132 0.7		2120 1.6		2152 0.5
2	0317 0.4	10	0344 1.5	18	0349 0.7	26	0404 1.7
Su	0918 1.8		0953 0.7		0947 1.5		0910 0.5
	1530 0.5	Mo	1607 1.6	Tu	1553 0.7	We	1633 1.8
	2145 1.9		2221 0.7		2204 1.6		2254 0.5
3	0413 0.4	11	0432 1.5	19	0429 0.7	27	0505 1.7
Mo	1013 1.7		1041 0.8		1027 1.5		1112 0.5
	1625 0.5	Tu	1654 1.5	We	1635 0.7	Th	1732 1.9
	2242 1.8		2310 0.8		2248 1.6		2357 0.5
4	0507 0.5	12	0520 1.5	20	0509 0.7	28	0604 1.8
Tu	1106 1.7		1130 0.8		1110 1.6		1213 0.5
	1719 0.5	We	1740 1.5	Th	1720 0.7	Fr	1830 1.9
	2337 1.8				2334 1.7		
5	0557 0.5	13	0000 0.8	21	0550 0.6	29	0058 0.5
We	1158 1.7		0608 1.5		1155 1.6		0703 1.8
	1812 0.6	Th	1218 0.8	Fr	1807 0.6	Sa	1312 0.5
			1825 1.6				1928 1.9
6	0030 1.8	14	0050 0.8	22	0023 1.7	30	0158 0.5
Th	0646 0.6		0656 1.5		0634 0.6		0759 1.7
	1250 1.6	Fr	1304 0.8	Sa	1244 1.6	Su	1410 0.5
	1903 0.6		1909 1.6		1858 0.6		2025 1.9
7	0121 1.7	15	0138 0.8	23	0114 1.7	31	0256 0.5
Fr	0733 0.6		0741 1.5		0721 0.6		0855 1.7
	1341 1.6	Sa	1349 0.8	Su	1337 1.7	Mo	1506 0.5
	1954 0.7		1953 1.6		1953 0.6		2122 1.8
8	0210 1.6	16	0224 0.7	24	0208 1.7		
Sa	0820 0.7		0825 1.5		0813 0.6		
	1430 1.6	Su	1431 0.8	Mo	1434 1.7		
	2043 0.7		2037 1.6		2051 0.5		

TIMES LISTED ARE N.Z. STANDARD TIME

CROWN COPYRIGHT RESERVED

NEW ZEALAND HYDROGRAPHIC AUTHORITY TIDE PREDICTIONS

WELLINGTON

Lat. 41° 17' S Long. 174° 47' E

JUNE 2021

N.Z. LOCAL TIMES AND HEIGHTS OF HIGH AND LOW WATERS

	Time	m		Time	m		Time	m		Time	m
1	0351	0.5	9	0404	1.5	17	0401	0.7	25	0445	1.7
	0949	1.7		1009	0.8		1000	1.5		1052	0.5
Tu	1601	0.5	We	1623	1.6	Th	1609	0.7	Fr	1712	1.9
	2218	1.8		2240	0.8		2222	1.7		2338	0.5
2	0443	0.5	10	0450	1.5	18	0443	0.6	26	0543	1.7
	1042	1.7		1055	0.8		1045	1.6		1055	0.5
We	1655	0.6	Th	1707	1.6	Fr	1658	0.7	Sa	1809	1.9
	2313	1.8		2329	0.8		2311	1.7			
3	0533	0.5	11	0537	1.5	19	0527	0.6	27	0037	0.5
	1134	1.7		1141	0.8		1133	1.6		0640	1.7
Th	1748	0.6	Fr	1751	1.6	Sa	1749	0.6	Su	1248	0.5
										1905	1.9
4	0006	1.7	12	0017	0.8	20	0002	1.7	28	0136	0.5
	0621	0.6		0623	1.5		0613	0.6		0736	1.7
Fr	1225	1.6	Sa	1227	0.8	Su	1225	1.7	Mo	1345	0.5
	1840	0.7		1834	1.6		1842	0.6		2002	1.8
5	0056	1.6	13	0105	0.7	21	0055	1.7	29	0232	0.5
	0707	0.6		0708	1.5		0703	0.6		0830	1.7
Sa	1316	1.6	Su	1311	0.8	Mo	1321	1.7	Tu	1440	0.5
	1931	0.7		1918	1.6		1938	0.5		2057	1.8
6	0144	1.6	14	0151	0.7	22	0150	1.7	30	0325	0.5
	0752	0.7		0751	1.5		0756	0.6		0923	1.7
Su	1405	1.6	Mo	1355	0.8	Tu	1418	1.8	We	1535	0.6
	2019	0.7		2003	1.6		2037	0.5		2152	1.7
7	0231	1.5	15	0236	0.7	23	0248	1.7			
	0837	0.7		0834	1.5		0853	0.5			
Mo	1453	1.6	Tu	1439	0.7	We	1517	1.8			
	2106	0.7		2048	1.6		2136	0.5			
8	0317	1.5	16	0319	0.7	24	0346	1.7			
	0922	0.7		0916	1.5		0952	0.5			
Tu	1538	1.6	We	1523	0.7	Th	1615	1.9			
	2153	0.8		2135	1.6		2237	0.5			

TIMES LISTED ARE N.Z. STANDARD TIME

CROWN COPYRIGHT RESERVED

NEW ZEALAND HYDROGRAPHIC AUTHORITY TIDE PREDICTIONS

WELLINGTON

Lat. 41° 17' S Long. 174° 47' E

JULY 2021

N.Z. LOCAL TIMES AND HEIGHTS OF HIGH AND LOW WATERS

Time	m	Time	m	Time	m	Time	m
1	0417 0.6	9	0417 1.5	17	0421 0.6	25	0522 1.7
Th	1015 1.7	Fr	1019 0.8	Sa	1025 1.6	Su	1130 0.5
	1629 0.6		1632 1.6		1642 0.6		1748 1.8
	2246 1.7		2252 0.7		2253 1.7		
2	0506 0.6	10	0503 1.5	18	0508 0.6	26	0015 0.5
Fr	1106 1.6	Sa	1105 0.7	Su	1117 1.7	Mo	0617 1.7
	1723 0.6		1716 1.6		1736 0.6		1226 0.5
	2338 1.6		2340 0.7		2345 1.7		1843 1.8
3	0553 0.6	11	0549 1.5	19	0557 0.6	27	0111 0.5
Sa	1157 1.6	Su	1150 0.7	Mo	1211 1.7	Tu	0711 1.7
	1814 0.7		1800 1.6		1831 0.6		1321 0.6
							1937 1.8
4	0027 1.6	12	0029 0.7	20	0039 1.7	28	0206 0.6
Su	0638 0.7	Mo	0634 1.5	Tu	0648 0.6	We	0804 1.7
	1247 1.6		1236 0.7		1307 1.8		1416 0.6
	1903 0.7		1846 1.6		1926 0.5		2031 1.7
5	0115 1.6	13	0117 0.7	21	0135 1.7	29	0258 0.6
Mo	0722 0.7	Tu	0719 1.5	We	0741 0.5	Th	0855 1.7
	1336 1.6		1323 0.7		1404 1.8		1510 0.6
	1950 0.7		1933 1.6		2023 0.5		2125 1.7
6	0201 1.5	14	0204 0.7	22	0231 1.7	30	0348 0.6
Tu	0806 0.7	We	0804 1.5	Th	0837 0.5	Fr	0946 1.6
	1422 1.6		1410 0.7		1501 1.8		1603 0.6
	2035 0.7		2021 1.7		2121 0.5		2217 1.6
7	0246 1.5	15	0250 0.7	23	0329 1.7	31	0435 0.6
We	0850 0.7	Th	0849 1.6	Fr	0935 0.5	Sa	1037 1.6
	1506 1.6		1459 0.7		1557 1.9		1654 0.7
	2120 0.8		2111 1.7		2219 0.5		2307 1.6
8	0331 1.5	16	0336 0.6	24	0426 1.7		
Th	0934 0.7	Fr	0936 1.6	Sa	1033 0.5		
	1549 1.6		1550 0.6		1653 1.9		
	2205 0.8		2201 1.7		2317 0.5		

TIMES LISTED ARE N.Z. STANDARD TIME

CROWN COPYRIGHT RESERVED

NEW ZEALAND HYDROGRAPHIC AUTHORITY TIDE PREDICTIONS

WELLINGTON

Lat. 41° 17' S Long. 174° 47' E

AUGUST 2021

N.Z. LOCAL TIMES AND HEIGHTS OF HIGH AND LOW WATERS

	Time	m		Time	m		Time	m		Time	m
1	0521	0.7	9	0512	1.5	17	0542	0.6	25	0045	0.6
	1126	1.6		1115	0.7		1157	1.8		0646	1.7
Su	1744	0.7	Mo	1727	1.7	Tu	1819	0.5	We	1258	0.6
	2355	1.6		2351	0.7					1913	1.7
2	0605	0.7	10	0600	1.5	18	0025	1.7	26	0138	0.6
	1215	1.6		1204	0.7		0634	0.5		0646	1.7
Mo	1831	0.7	Tu	1816	1.7	We	1254	1.8	Th	1352	0.6
							1914	0.5		2005	1.7
3	0040	1.5	11	0042	0.7	19	0119	1.7	27	0229	0.6
	0648	0.7		0648	1.6		0727	0.5		0828	1.6
Tu	1301	1.6	We	1255	0.7	Th	1350	1.8	Fr	1445	0.7
	1915	0.7		1906	1.7		2008	0.5		2057	1.6
4	0125	1.5	12	0133	0.7	20	0215	1.7	28	0317	0.7
	0731	0.7		0736	1.6		0822	0.5		0917	1.6
We	1346	1.6	Th	1347	0.6	Fr	1445	1.8	Sa	1536	0.7
	1958	0.7		1958	1.7		2103	0.5		2147	1.6
5	0209	1.5	13	0223	0.6	21	0311	1.7	29	0403	0.7
	0813	0.7		0825	1.6		0918	0.5		1005	1.6
Th	1429	1.6	Fr	1441	0.6	Sa	1539	1.8	Su	1625	0.7
	2041	0.7		2051	1.7		2159	0.6		2234	1.6
6	0253	1.5	14	0312	0.6	22	0406	1.7	30	0447	0.7
	0857	0.7		0916	1.7		1014	0.5		1053	1.6
Fr	1512	1.6	Sa	1535	0.6	Su	1633	1.8	Mo	1712	0.7
	2125	0.7		2144	1.7		2255	0.6		2319	1.5
7	0338	1.5	15	0401	0.6	23	0501	1.7	31	0530	0.7
	0942	0.7		1008	1.7		1110	0.6		1138	1.6
Sa	1555	1.6	Su	1630	0.6	Mo	1727	1.8	Tu	1756	0.7
	2211	0.7		2237	1.7		2351	0.6			
8	0425	1.5	16	0451	0.6	24	0554	1.7			
	1028	0.7		1102	1.7		1204	0.6			
Su	1640	1.6	Mo	1725	0.5	Tu	1820	1.7			
	2300	0.7		2331	1.7						

TIMES LISTED ARE N.Z. STANDARD TIME

CROWN COPYRIGHT RESERVED

CREW CONTACT DETAILS